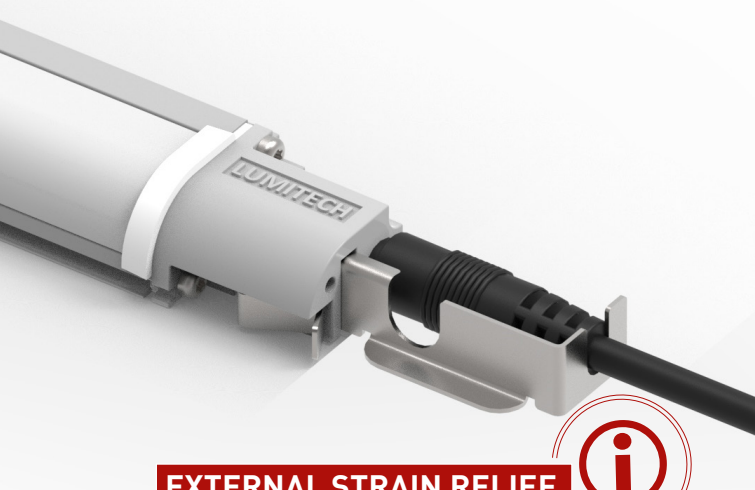
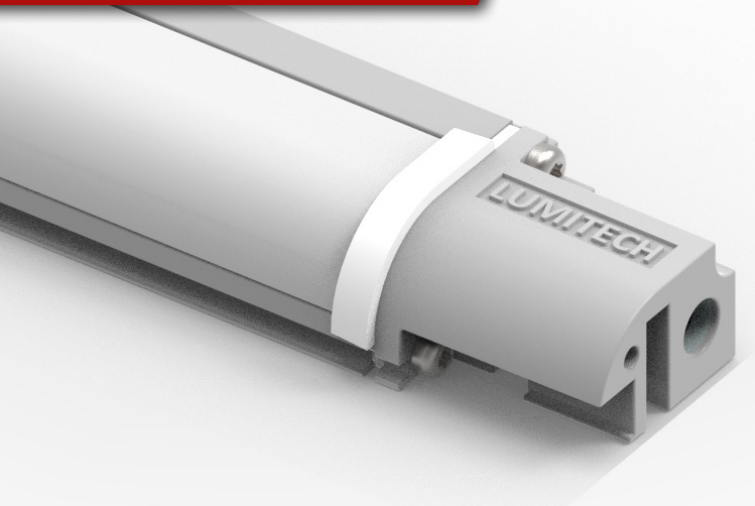


AVAILABLE NOW!



EXTERNAL STRAIN RELIEF



COMPLIANCE WITH STANDARD EN 60335



YOUR ADVANTAGES AT A GLANCE

- **Highest efficiency on the market**
up to 150 lm/W thanks to spectrally optimized phosphor formulations
- **Compatibility**
Uniform mechanical dimensions, electrical system and connection technology compatible with existing solutions
- **Individual**
Available in individual lengths and light colours matched to specific food types (up to CRI 95)
- **Excellent product illumination**
Homogeneous light line and one continuous luminaire (without interruptions) for each offered length
Use of highly efficient SMD LEDs and innovative optics
- **Safety**
Complies with all commercial standards (UL, EN60335-2-89, etc.) SELV, IP54, Made in EU, Service life 70,000h
- **Fast delivery**
within 2 weeks (+ transport) within Europe



COMPATIBILITY

UNIFY