

Installation instructions – *myPILED PC Application*

## 1. System requirements

---

### Supported operating systems:

- Windows 7 (x86, x64)
- Windows 8 (x86, x64)
- Windows 8.1 (x86, x64)
- Windows 10 (x86, x64)

### Minimum hardware requirements:

- 1 GHz or faster microprocessor
- 512 MB of RAM
- 8 MB of available hard disc space (without .NET Framework)

### Installed .NET Framework:

- .NET Framework 4.5.2

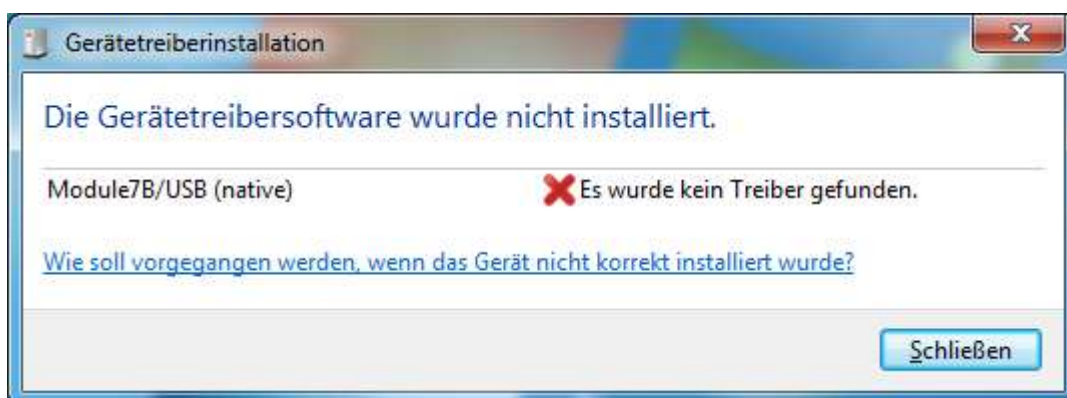
## 2. Initial installation using Zigbee USB stick

---

1. Plug Zigbee USB stick into the PC.



2. Install device driver by clicking on the hyperlink (see below) "Skip".



3. Leave USB stick plugged in

## 3. Initial installation using DALI USB

---

1. Connect Lunatone DALI USB to the PC



2. Install Lunatone DALI Cockpit

<http://lunatone.at/en/downloads>

## 4. Installation of myPILED application

1. Download the file [myPILED.zip](#)
2. Unzip File → myPILED.msi
3. Click “Run”.

On **Windows 10** the following safety dialogs will be displayed:



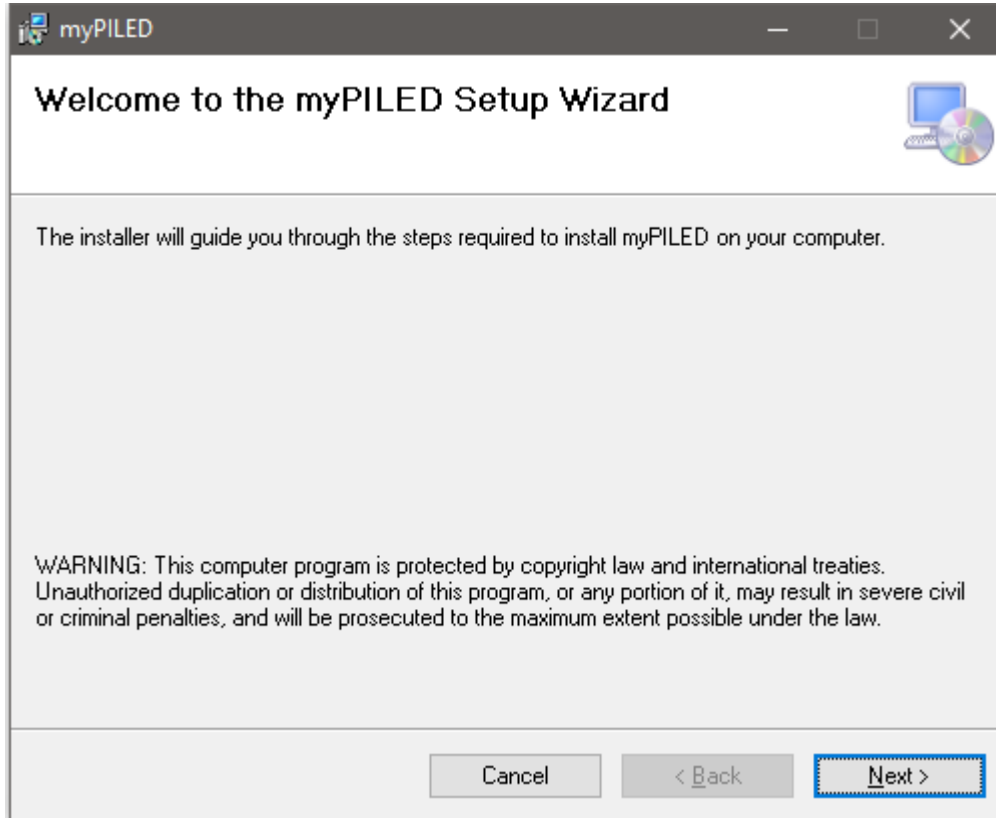
Click on „Weitere Information“



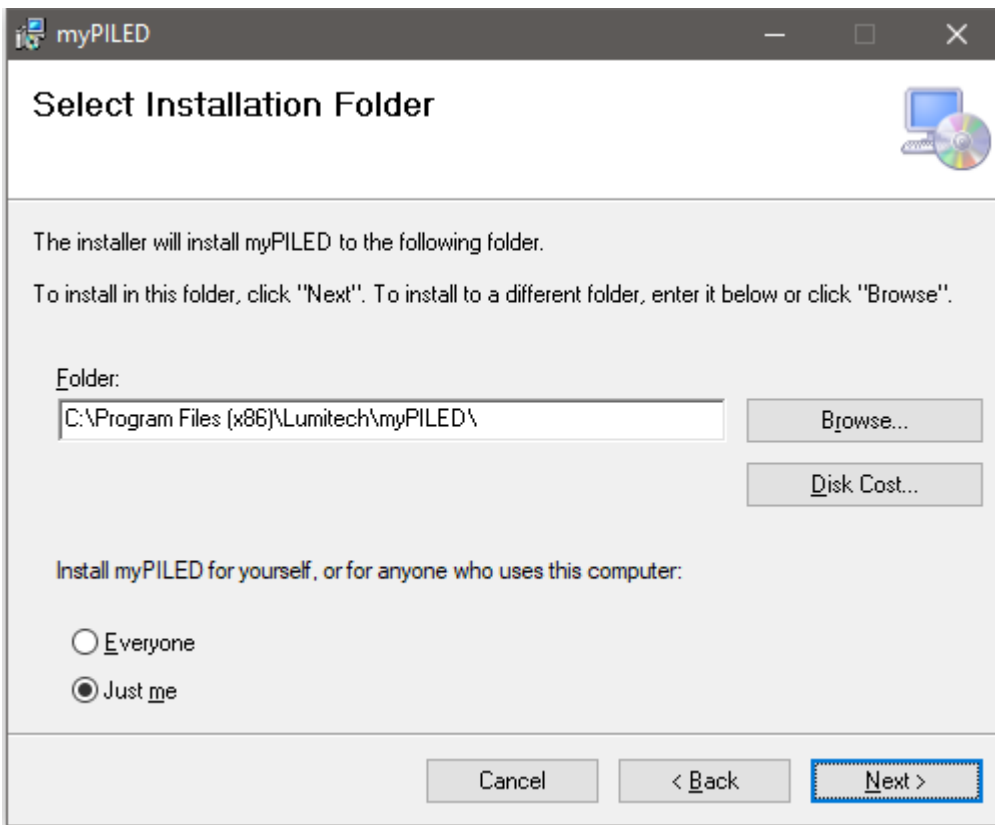
Click on „Trotzdem ausführen“

On other operating system versions there may be other safety dialogs.

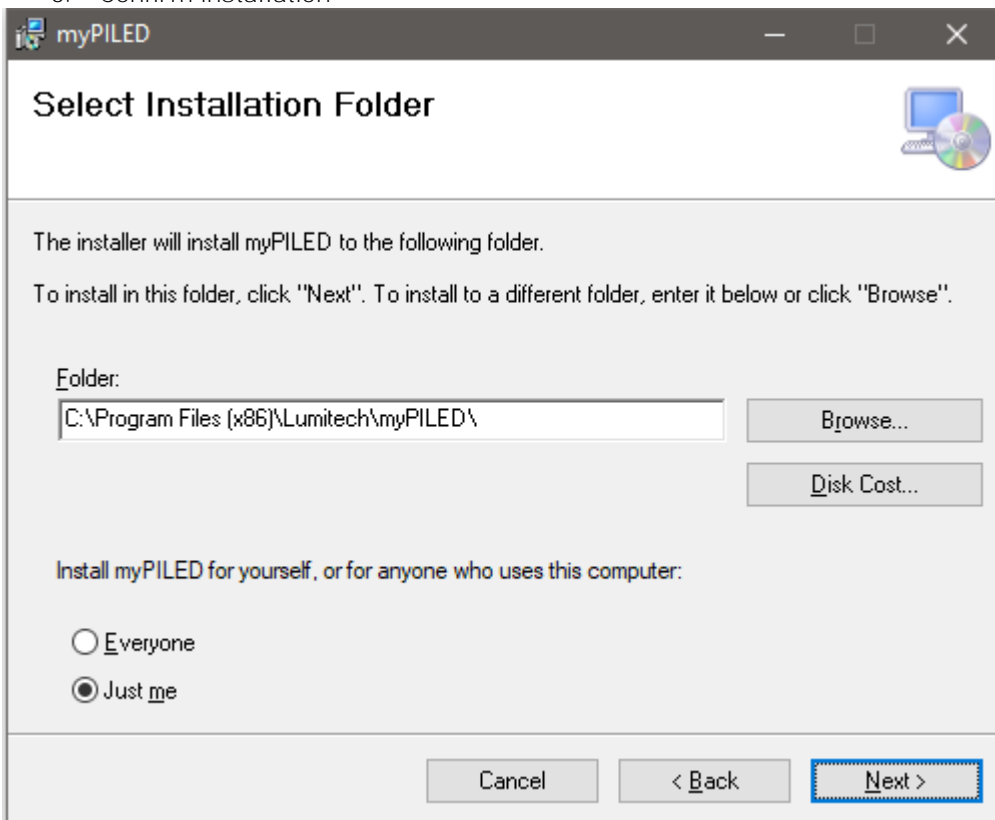
### 4. Run installation wizard



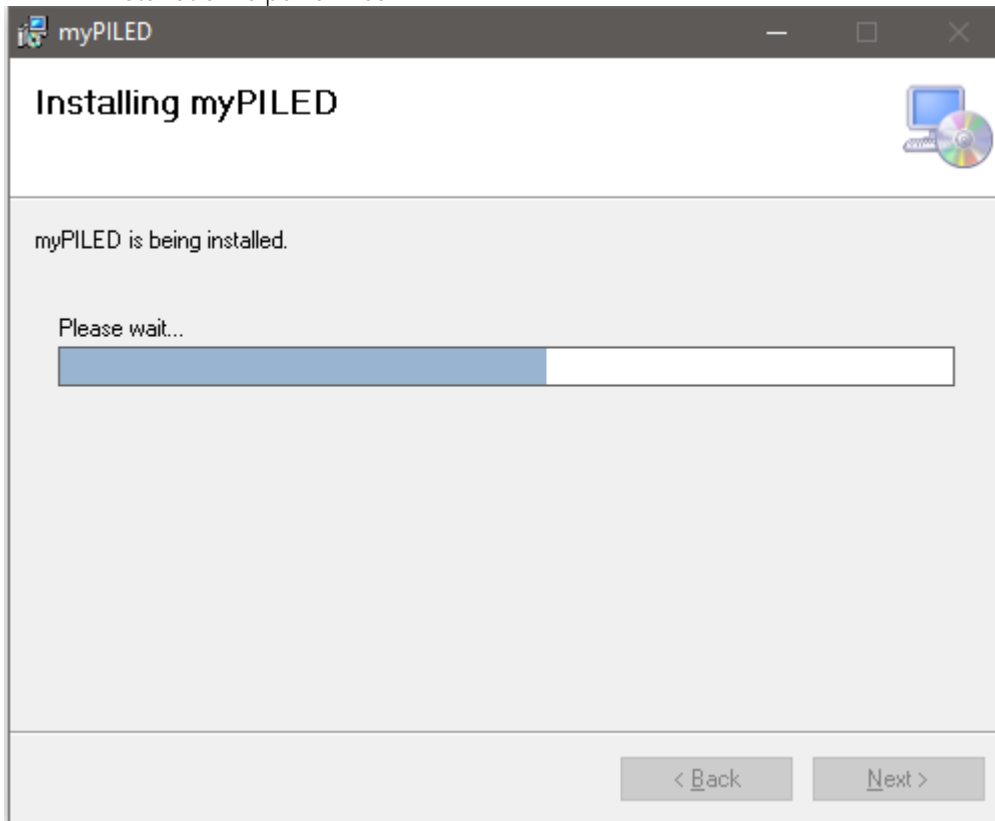
5. Select installation folder



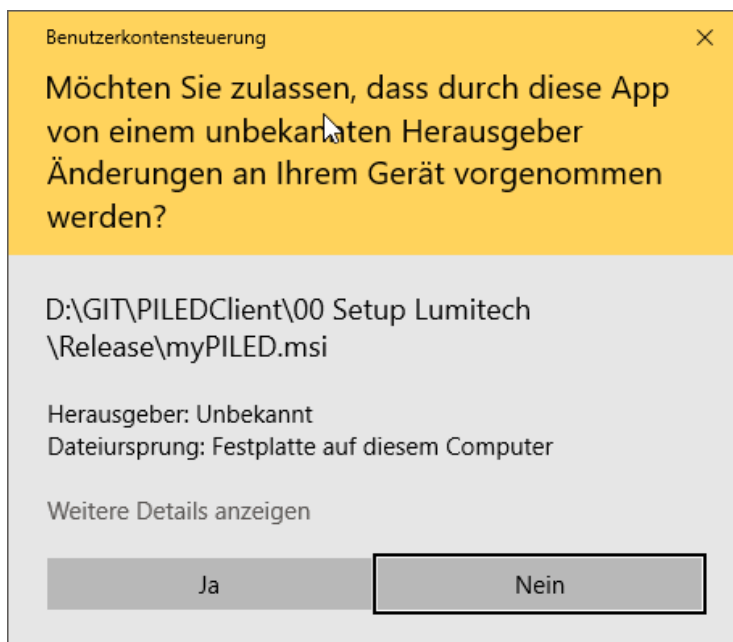
6. Confirm installation



## 7. Installation is performed

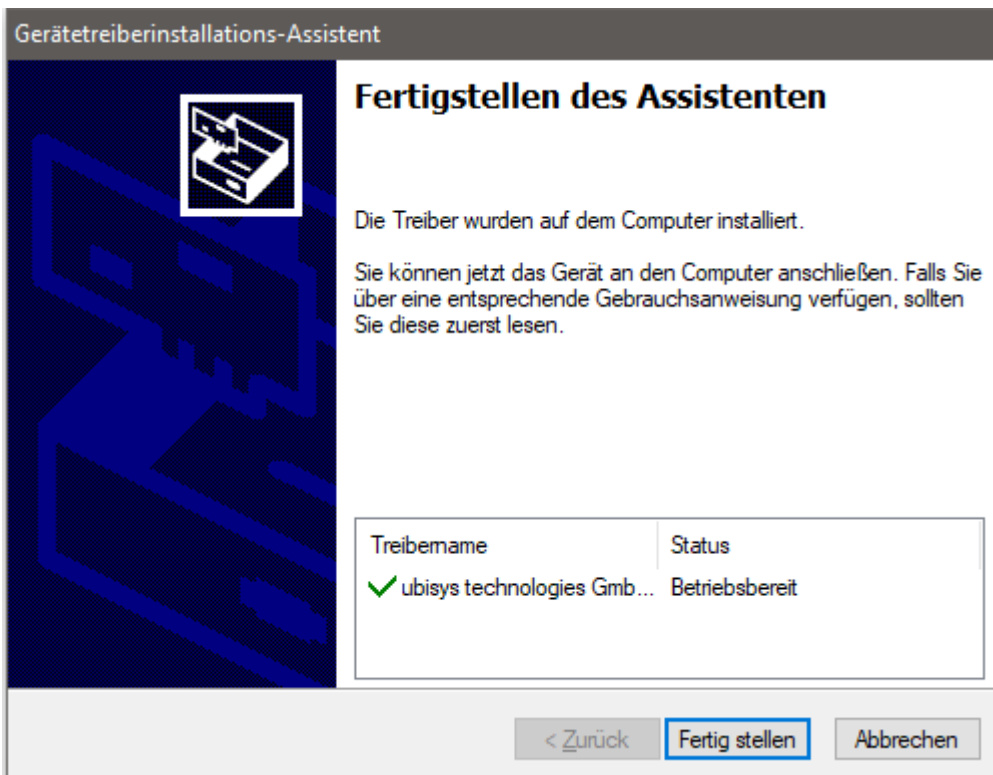
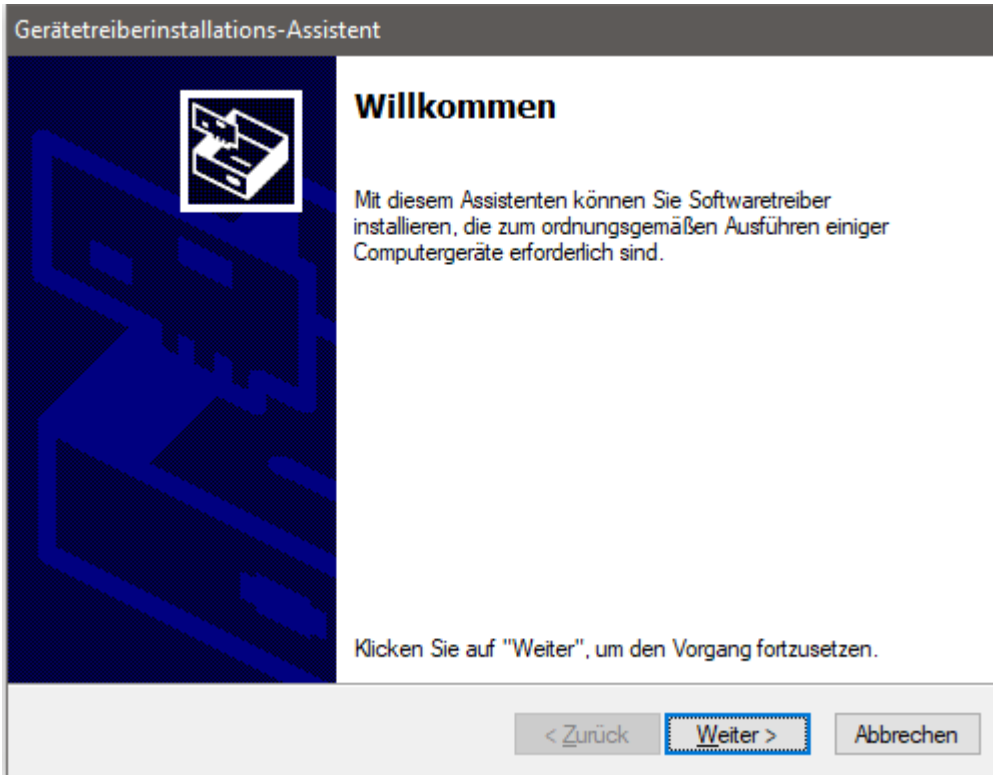


## 8. Confirm installation as Administrator



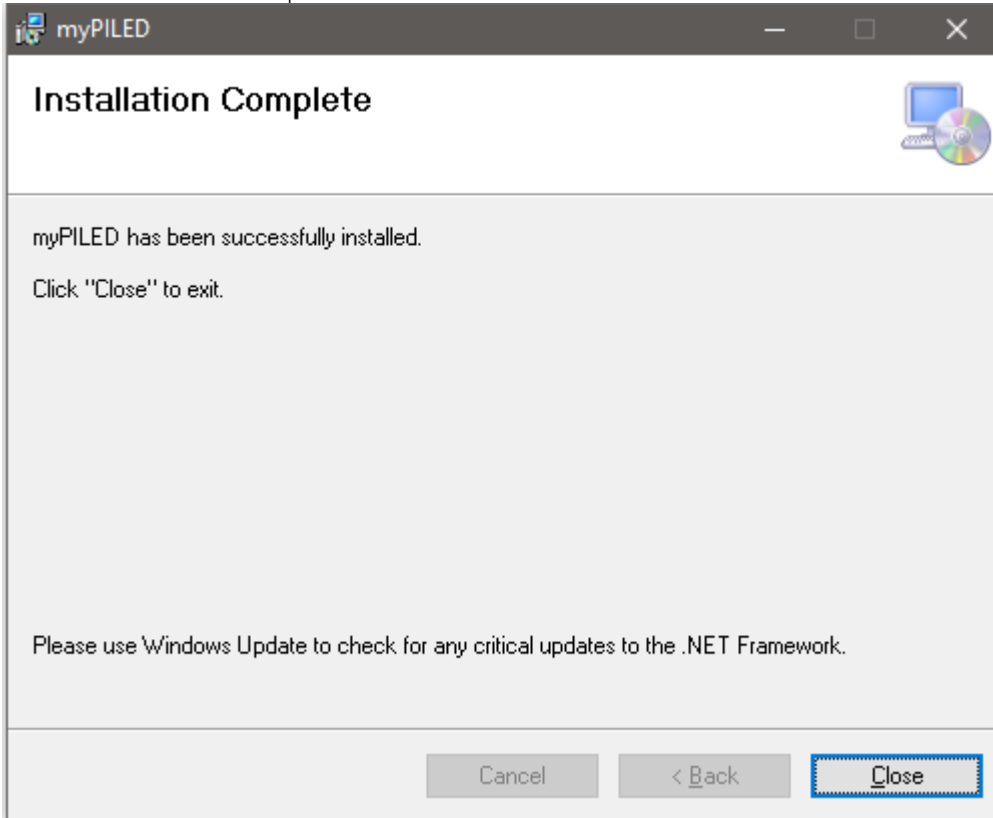
## 9. Perform device driver installation

Note: The device driver will be installed only if the device driver for the Zigbee USB stick has not yet been installed

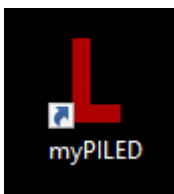




## 10. Installation complete



## 11. Desktop Link



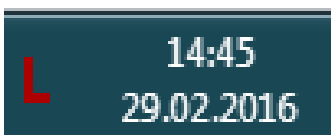
If the installation is successful, a link to the application will appear on the desktop.

## 13. Taskbar Notification Area



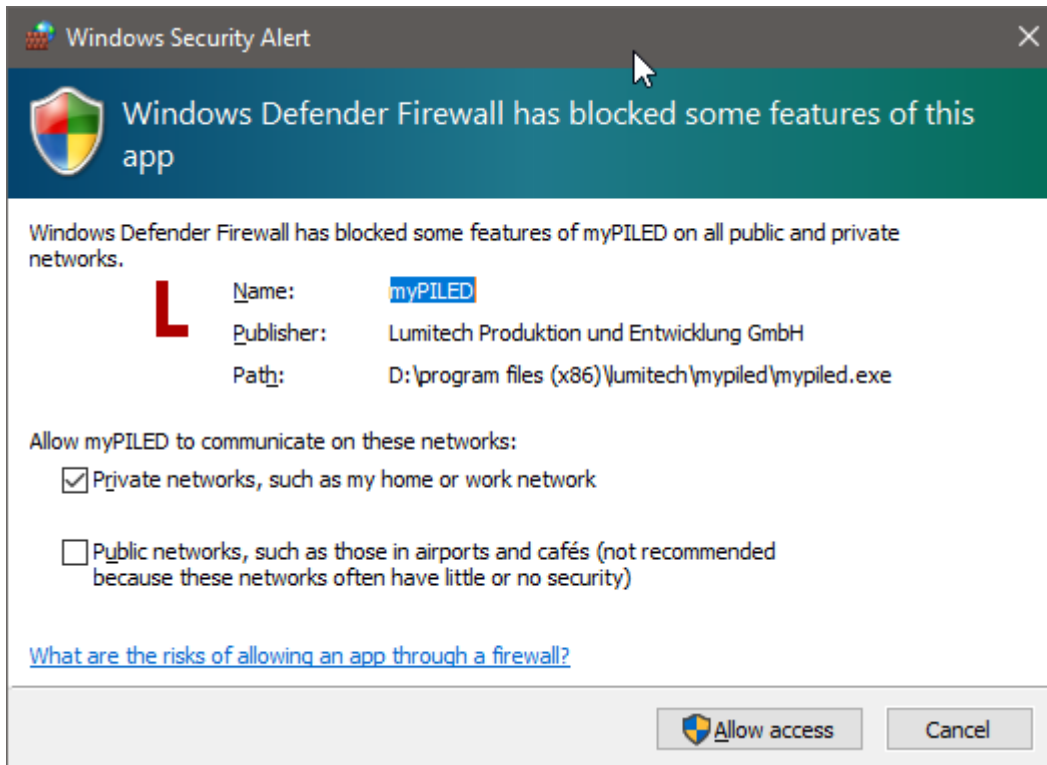
If the application is launched the application icon is displayed in the so called "Taskbar Notification Area" right next to the time.

The application icon can be displayed as a permanent icon in the notification area by means of "Drag & Drop"

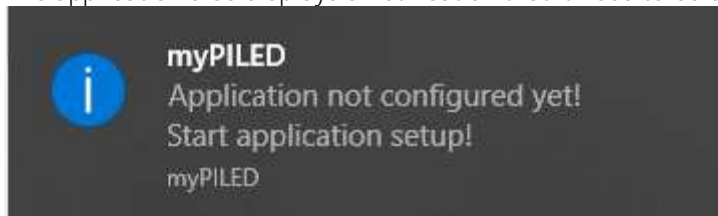


## 5. First time start of application

Is the applications started for the first time there might be a Windows Firewall Warning displayed. Click on „Allow access“.

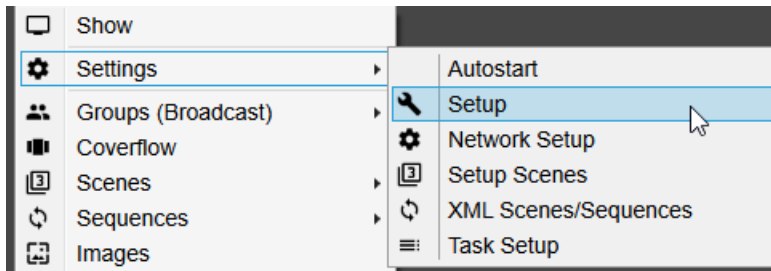


The application also displays a notification that it need to be configured:



The “Application Setup dialog” will be displayed automatically.

## 6. Setup

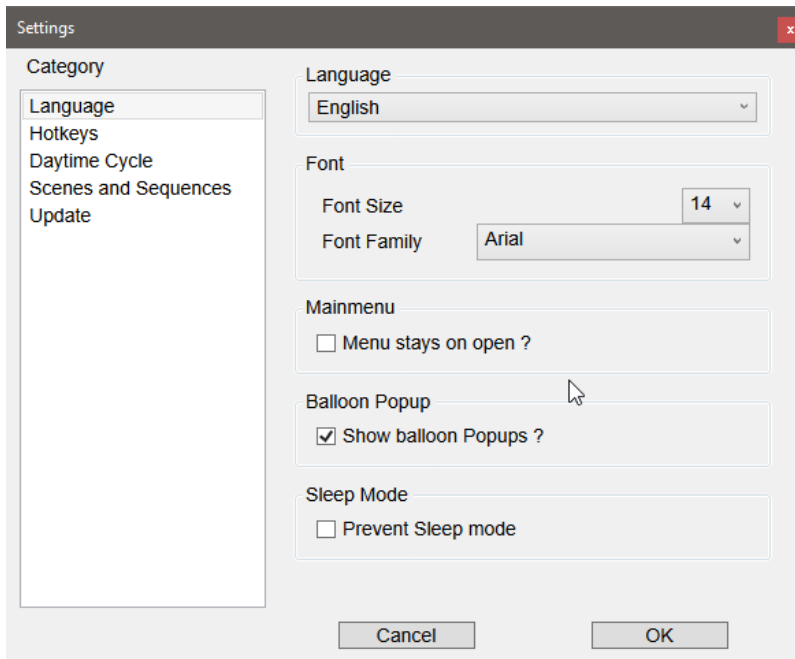


To configure the application go to Settings→Setup.

<<Autostart> option is used to automatically start the application when the computer is booted and a user logs in.

In the Setup Dialog you can define the following categories of features:

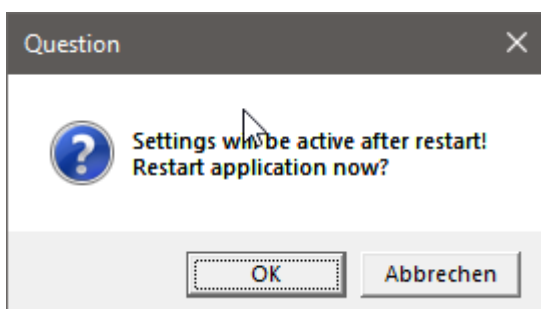
- Language
- Hotkeys
- Daytimecycle
- Scenes and Sequences
- Update

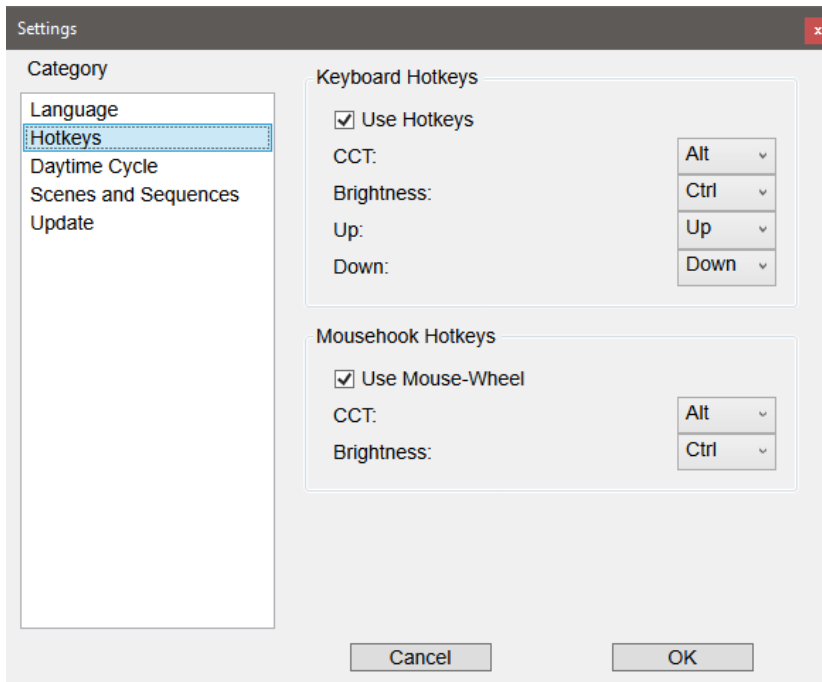


- Language (Deutsch, English, Francais)
- Font and Font size
- „Menu stays open“ can be used to allow easier usage of the application e.g. on tablets (where a right mouse click can only be executed through longer press on the display)
- „Show balloon popups“ displays newly applied light settings with popups in the lower right corner above the application logo.
- „Prevent Sleep Mode“ shall prevent the computer from going into this mode e.g. when running sequences in the background

### Hint!

The new settings will be applied after the application is restarted.

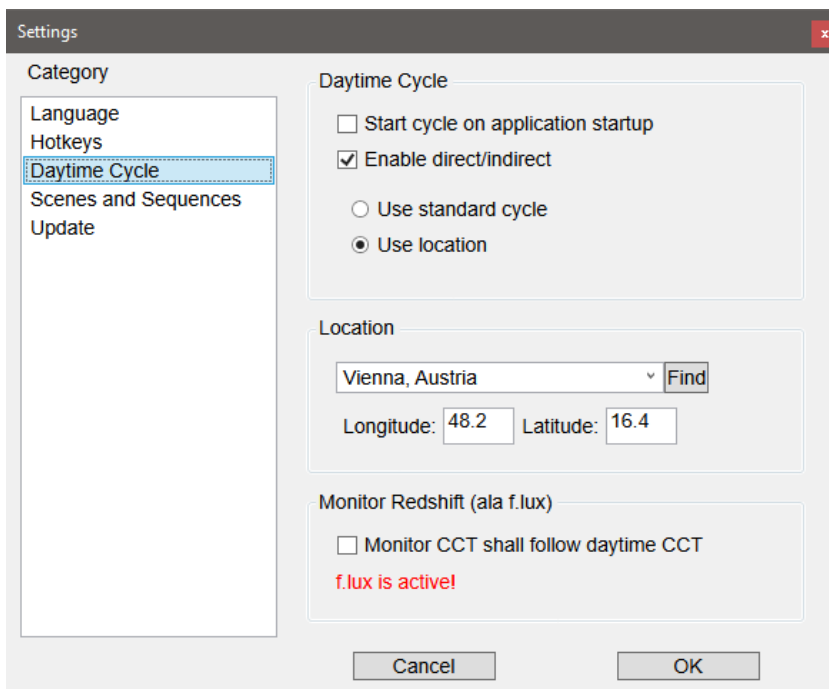




- Keyboard Hotkeys for changing brightness and colour temperature
- Modifier key for control of brightness and colour temperature with the mouse wheel

**Hint!**

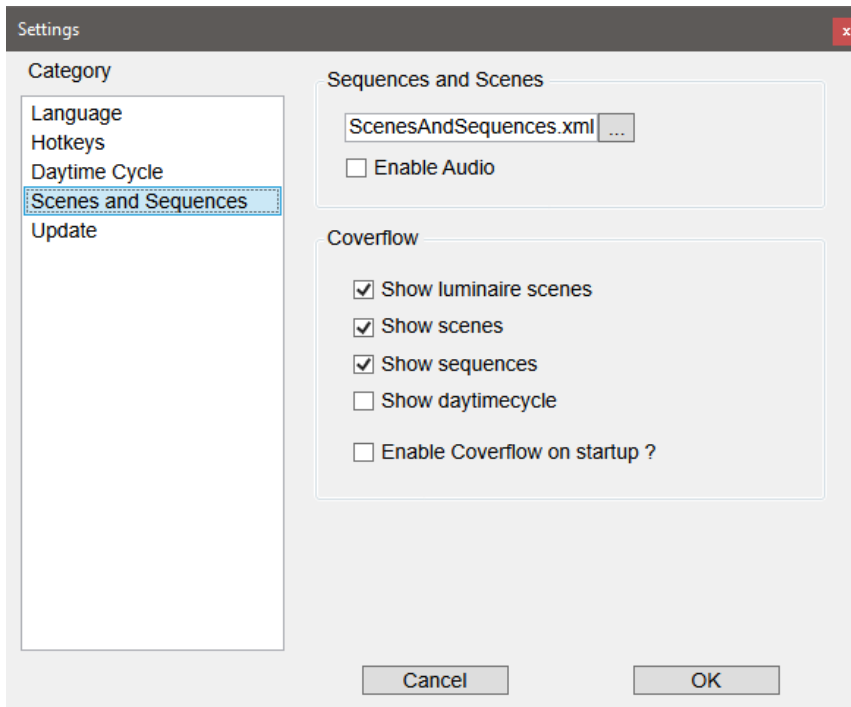
The new settings will be applied after the application is restarted.



- Start Daytimecycle automatically when application is started
- Use a standard Daytimecycle or a location based one
- Daytimecycle for direct/indirect lights (only available on Zigbee)
- GPS coordinates for location based Daytimecycle
- Monitor colour follows Daytimecycle

If the Daytimecycle is active every 30 seconds a new command will be send to the lights.

To search for a location enter the name of the city into the textbox and press <<Find>>. A Google service is queried for the actual GPS coordinates. To use this you need an active Internet connection



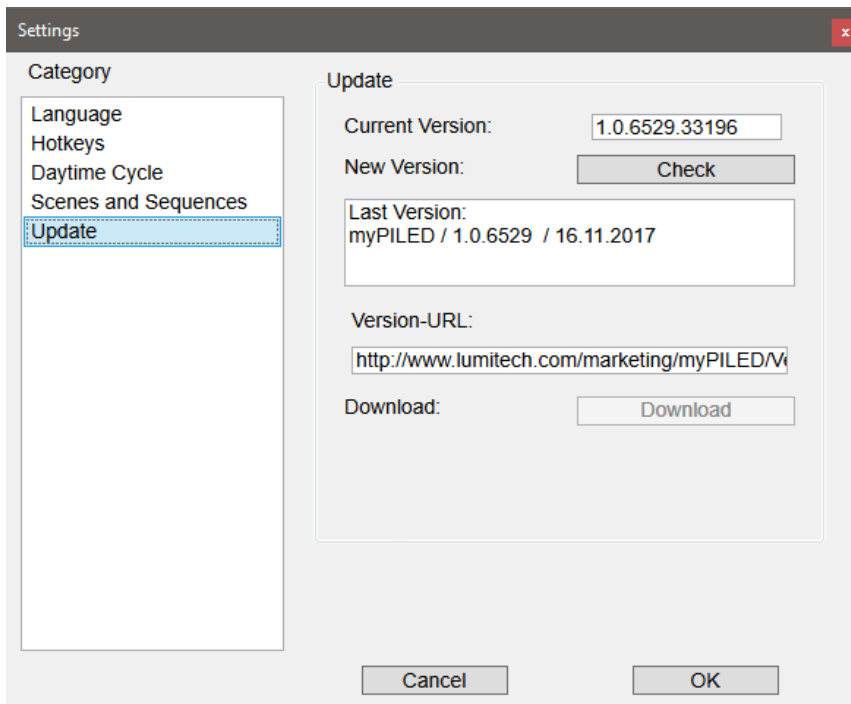
- Choose the active XML file which is used for scenes and sequences.

Coverflow settings:

- Show scenes stored on luminaires itself
- Show scenes from XML file
- Show sequences from XML file
- Show picture for Daytimecycle

and

- Enable Coverflow on application start-up



The actual application version is displayed.

With <<Check>> you can look for a new application version on the Lumitech server.

In the textbox „Version-URL“ the actual URL where the application looks for a new version can be changed e.g. when a new  $\beta$ -Version is available

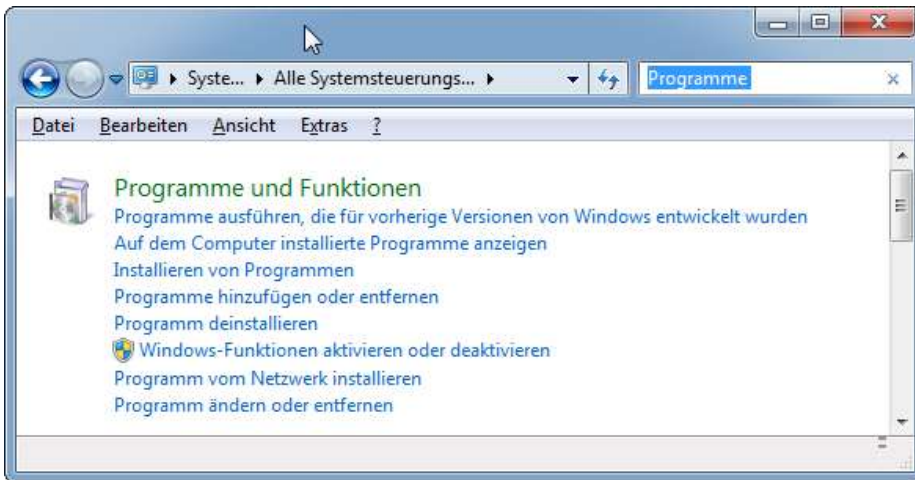
If there is a new version available the <<Download>> button will be active and you can download and install the new version.

### Attention!

The application settings will be retained throughout application updates

## 7. Uninstallation

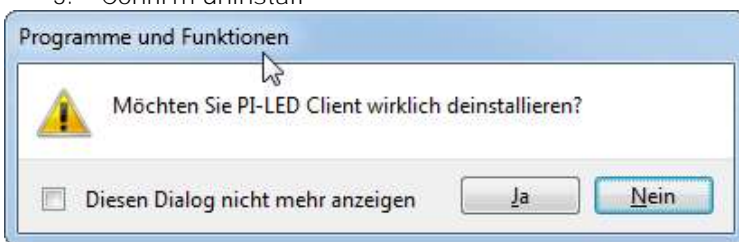
1. Go to “Start→Control Panel→Add or remove programs”



2. Search for the program “myPILED”, → right-click → uninstall.



3. Confirm uninstall

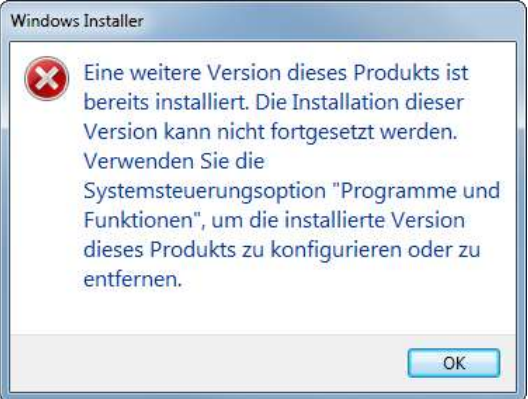
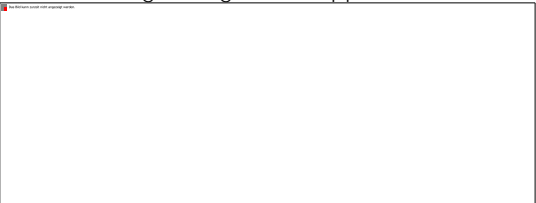


4. Wait for uninstallation (confirm “Run as Administrator” if necessary)



Note: The USB stick drivers remain installed so that they do not have to be installed again during an update of the PC application.

## 8. Troubleshooting

Problem	Action
<p>The following dialogue appears during installation:</p> 	<p>The downloaded program version is already installed.</p> <p>To install this version again, you must uninstall the current version manually (see point 4) and run the set-up file (myPILED.msi) again.</p>
<p>The following dialogue will appear:</p> 	<p>The .Net Framework version &gt; 4.5.2 must be installed.</p> <p>Manually download the framework from the Microsoft website.</p>

## 9. Contact

LUMITECH Produktion und Entwicklung GmbH  
 Technologiepark 10  
 A-8380 Jennersdorf  
 Tel +43 (0)3329 90 900 0  
 Fax +43 (0)3329 90 900 10  
 office@lumitech.com