

COUNTER | Bright Line



Refrigeration & non-refrigeration equipment



Counter lighting



High efficiency



QCS
Quick-Connection-System



Dimmable



Various lengths



Neutral
White

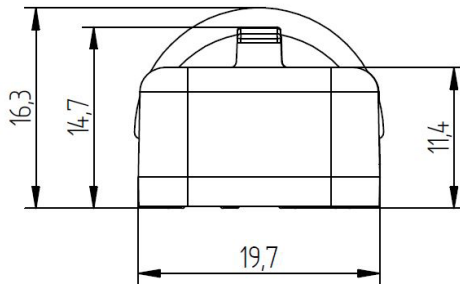
Warm
White

Pasta &
Cheese

Bread &
Pastries

Meat &
Deli

COUNTER | Bright Line



PRODUCT DESCRIPTION

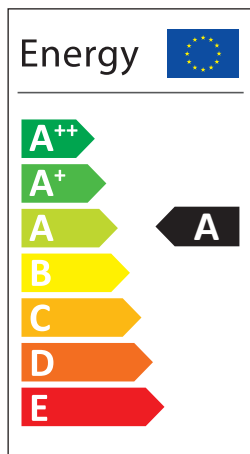
- High efficient lighting for counters and cabinets
- Available in a variety of light colours and can be matched to specific food types
- Ready-to-connect solution available, thanks to our Quick Connection System (QCS)
- High operational performance due to directional lighting, integrated heat removal and highly efficient LEDs
- Excellent product illumination thanks to the combination of SMD LEDs and innovative optics
- Safe-use operation due safety extra-low voltage (SELV)
- Simple installation with application of fixing plates
- Heat sink profile made of anodised, extruded aluminium
- LED modules protected against moisture & dust by Conformal coating
- End caps made of PBT
- Linear lenses made of PMMA
- Dimming capability

TECHNICAL DATA

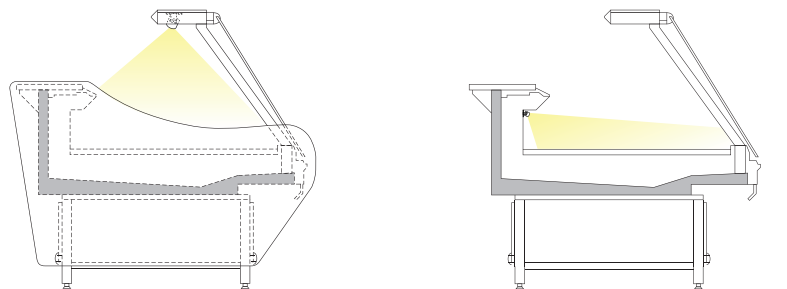
Supply voltage	24 VDC
Ambient temperature t_a	-30 ... +30 °C
Max. surface temperature on profile t_c	60 °C
Type of protection	IP20
Protection class	III
Risk group [EN 62471:2008]	1

IP20 US LISTED

ENERGY CLASS



APPLICATION



COUNTER | Bright Line

TECHNICAL DATA | ORDER DATA

Art. Nr.	Type	Colour	No. of modules	Luminous flux (lm)	Power (W)	CRI
91420040	Bright-Line Counter 910mm, 4000K CRI90, 15W, COF8Q	NW	6	1780	15,0	≥90
91420041	Bright-Line Counter 910mm, 3000K CRI90, 15W, COF8Q	WW	6	1550	15,0	≥90
91420042	Bright-Line Counter 910mm, 2700K CRI90, 15W, COF8Q	PC	6	1470	15,0	≥90
91420043	Bright-Line Counter 910mm, 2400K CRI90, 15W, COF8Q	BP	6	1400	15,0	≥90
91420044	Bright-Line Counter 910mm, Meat CRI90, 15W, COF8Q	PM	6	1400	15,0	≥90
91420045	Bright-Line Counter 910mm, 4000K CRI90, 15W, COW8Q	NW	6	1450	15,0	≥90
91420046	Bright-Line Counter 910mm, 3000K CRI90, 15W, COW8Q	WW	6	1260	15,0	≥90
91420047	Bright-Line Counter 910mm, 2700K CRI90, 15W, COW8Q	PC	6	1200	15,0	≥90
91420048	Bright-Line Counter 910mm, 2400K CRI90, 15W, COW8Q	BP	6	1140	15,0	≥90
91420049	Bright-Line Counter 910mm, Meat CRI90, 15W, COW8Q	PM	6	1140	15,0	≥90
91420050	Bright-Line Counter 1200mm, 4000K CRI90, 20W, COF8Q	NW	8	2370	20,0	≥90
91420051	Bright-Line Counter 1200mm, 3000K CRI90, 20W, COF8Q	WW	8	2070	20,0	≥90
91420052	Bright-Line Counter 1200mm, 2700K CRI90, 20W, COF8Q	PC	8	1960	20,0	≥90
91420053	Bright-Line Counter 1200mm, 2400K CRI90, 20W, COF8Q	BP	8	1860	20,0	≥90
91420054	Bright-Line Counter 1200mm, Meat CRI90, 20W, COF8Q	PM	8	1860	20,0	≥90
91420055	Bright-Line Counter 1200mm, 4000K CRI90, 20W, COW8Q	NW	8	1940	20,0	≥90
91420056	Bright-Line Counter 1200mm, 3000K CRI90, 20W, COW8Q	WW	8	1680	20,0	≥90
91420057	Bright-Line Counter 1200mm, 2700K CRI90, 20W, COW8Q	PC	8	1600	20,0	≥90
91420058	Bright-Line Counter 1200mm, 2400K CRI90, 20W, COW8Q	BP	8	1520	20,0	≥90
91420059	Bright-Line Counter 1200mm, Meat CRI90, 20W, COW8Q	PM	8	1520	20,0	≥90

Packaging: 12 pieces/carton, 360 pieces/pallet

- All typical values for Ta=25°C +/- 2°C, setting time =200ms
- Luminous flux min. value = typ. value - 20%
- Tolerance mechanical dimensions +/- 1mm
- Tolerance electrical data +/- 15%
- Tolerance optical data +/-10%

CONVERTER

Output voltage	24VDC +10%
Power converter	= sum of the typical individual power of the light engines + 20%
Chain length (luminaires)	120mA: max 21 modules 100mA: max 24 modules 80mA: max 28 modules 60mA: max 33 modules 40mA: max 40 modules

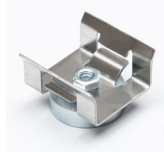
Selection of the operating device/protective functions

The operating device protects the modules against overvoltage, overcurrent, overload and short circuits. The device must comply with the relevant standards for safe operation in freezer and refrigeration equipment. Power supply units must ensure the following protective measures:

- SELV
- Short-circuit protection
- Overload protection
- Overtemperature protection
- Protection against environmental influences

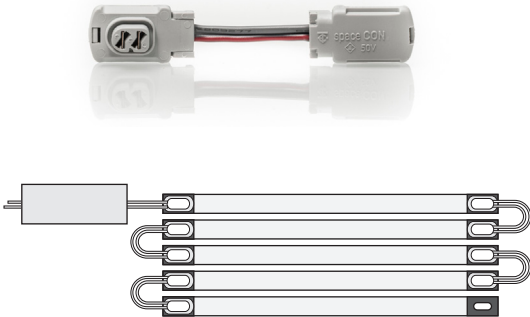
ACCESSORY - MOUNT | FIXING PLATES

Type	METAL 0°	METAL 0° magnetic	METAL 30°	METAL 45°	METAL adjustable	METAL adjustable magnetic
Art. Nr.	88167376	88167382	88167378	88167379	88167384	88167385



COUNTER | Bright Line

QUICK-CONNECTION-SYSTEM (QCS) | BRIDGES



- Bridge for connecting two linear LED engines via QCS
- Bridge for connecting a linear LED engine to a feeder link via QCS

ORDER DATA – Bridges

Length	Weight	Type	Art. Nr.
30 mm	0.004 kg	LED Bridge QCS 30 **	89601262
50 mm	0.004 kg	LED Bridge QCS 50 **	89601263
100 mm	0.005 kg	LED Bridge QCS 100 **	89601264
250 mm	0.007 kg	LED Bridge QCS 250 **	89601265
400 mm	0.009 kg	LED Bridge QCS 400 **	89601266
800 mm	0.016 kg	LED Bridge QCS 800 **	89601267
1,200 mm	0.022 kg	LED Bridge QCS 1200 *	89601268
2,000 mm	0.034 kg	LED Bridge QCS 2000 *	89601269

Packaging: * 25 pieces/carton, 400 pieces/pallet | ** 50 pieces/carton, 800 pieces/pallet
Also available in black.

QUICK-CONNECTION-SYSTEM (QCS) | FEEDER CABLE



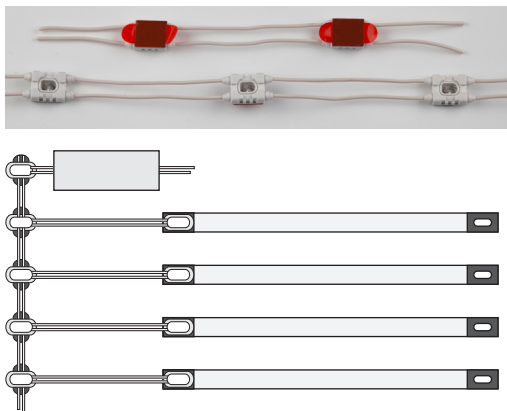
- Feeder cable for connecting a linear LED engine to a converter via QCS

ORDER DATA – Feeder Cable

Length	Weight	Type	Art. Nr.
500 mm	0.009 kg	LED Feeder QCS 500 **	89601258
1,000 mm	0.017 kg	LED Feeder QCS 1000 **	89601259
1,500 mm	0.025 kg	LED Feeder QCS 1500 *	89601260
2,000 mm	0.033 kg	LED Feeder QCS 2000 *	89601261
4,000 mm	0.065 kg	LED Feeder QCS 4000 ***	89601601

Packaging: * 25 pieces/carton, 400 pieces/pallet | ** 50 pieces/carton, 800 pieces/pallet | *** 10 pieces/carton
Also available in black.

QUICK-CONNECTION-SYSTEM (QCS) | FEEDER LINK



- Flexible feeder link for connecting several linear LED engines to a converter
- Slots equipped with double-sided adhesive tape

ORDER DATA – Feeder Link

Length	Spacing	Type	Art. Nr.
10m	108 mm	LED Feeder Link QCS	88711762

Packaging: 1 roll corresponds to 10m with 92 slots

QCS | PROTECTION SET



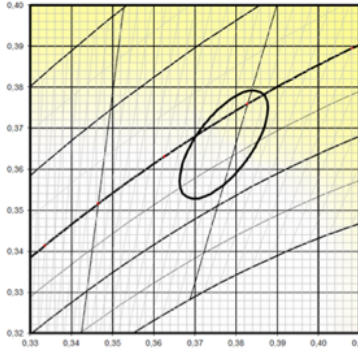
- Cover to protect QCS connectors

ORDERING DATA – Protection Set

Type	Packaging	Art. Nr.
LED PROTECTION QCS BLIND CAP	1 bag (holds 100 pieces)	88167414
LED PROTECTION QCS END CAP	1 bag (holds 50 pieces)	88167415

COORDINATES AND TOLERANCES ACCORDING TO CIE 1964 - DATA REFERS ONLY TO LED MODULES WITHOUT COVER

Neutral White



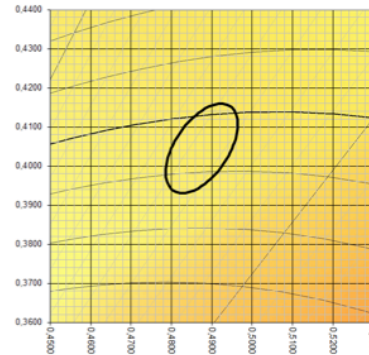
CIE coordinates

Neutral White 3950K

	x0	y0
Centre	0,3770	0,3660
MacAdam Ellipse: 3SDCM		

Suitable, e.g., for dairy products and frozen products

Bread & Pastries



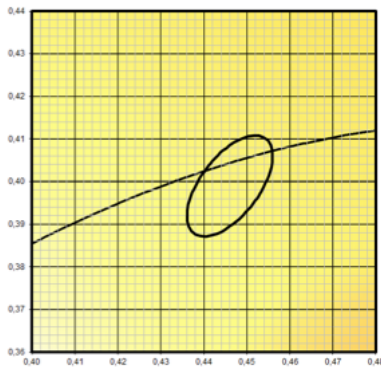
CIE coordinates

Bread & Pastries 2350K

	x0	y0
Centre	0,4900	0,4020
MacAdam Ellipse: 3SDCM		

Special colour for bread & pastries

Warm White



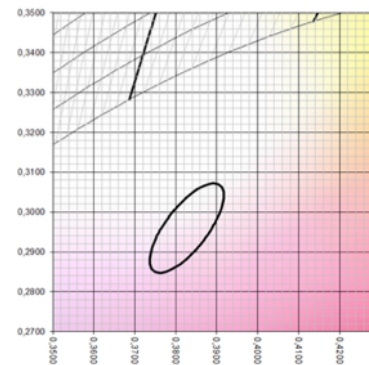
CIE coordinates

Warm White 2800K

	x0	y0
Centre	0,4480	0,3990
MacAdam Ellipse: 3SDCM		

Suitable, e.g., for vegetables, fruit and wine

Meat & Deli



CIE coordinates

Meat & Deli

	x0	y0
Centre	0,3830	0,3060
MacAdam Ellipse: 3SDCM		

Special colour for meat and deli

Pasta & Cheese



CIE coordinates

Pasta & Cheese 2660K

	x0	y0
Centre	0,4750	0,4160
MacAdam Ellipse: 3SDCM		

Special colour for pasta & cheese

COUNTER | Bright Line

COLOUR KEY

Code	CW	NW	WW	PC	BP	PM
Colour	Cool White	Neutral White	Warm White	Pasta & Cheese	Bread & Pastries	Meat & Deli
CCT	5000K	4000K	3000K	2700K	2400K	special colour

LIFETIME

50.000h (L70 B10)

THERMAL BEHAVIOUR

Operating temperature (operation, no defects)	ta	-30 ... +30 °C
Storage temperature	ts	-30 ... +60 °C
Temperature cooling profile ¹²	tc	-30 ... +60 °C

¹ Values apply to operation at 100% output, natural convection.

² If the maximum temperature limits are exceeded, the lifetime of the module will be greatly reduced or the module may be destroyed. The tc point temperature at the profile of the light engine should be measured in the thermally stable state and under operating conditions by means of a temperature sensor or temperature-sensitive sticker (available for example from conrad.com or rs-components.com) in accordance with EN60598-1. The entire profile can be used as the tc point.

STANDARDS

- EN 60598-1
- EN 60598-2-1
- EN 62031
- EN 62471
- EN 60335-2-89 ANNEX BB



Note

- Installation should only be conducted by a licensed electrician.
- Reversing the polarity can damage the product!
- Make sure the converter has been switched off prior to connecting the light engine. If this is not observed, the light engine may be damaged!
- Connection or operation is only permitted when using the specified converters. Higher voltages result in damage to or failure of the light engine.
- The user is responsible for correct selection of illumination intensity. Excessive illumination intensity may lead to greying or colour changes of displayed products.