

SHELF | Sense Line



Refrigeration equipment



Shelf lighting



High efficiency



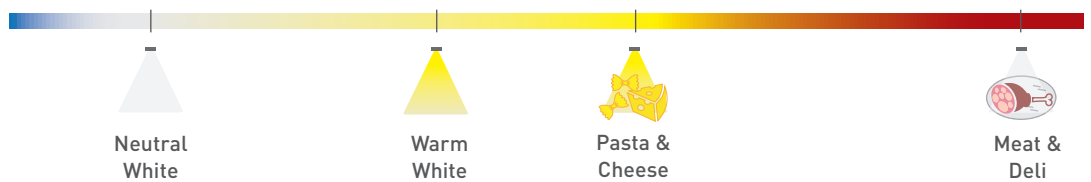
QCS
Quick-Connection-System



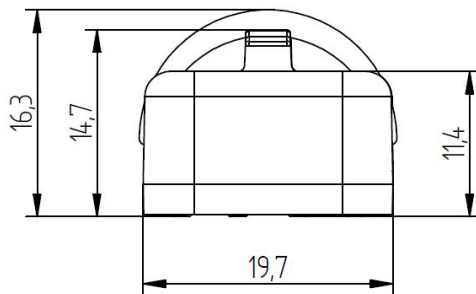
Dimmable



Various lengths



SHELF | Sense Line



PRODUCT DESCRIPTION

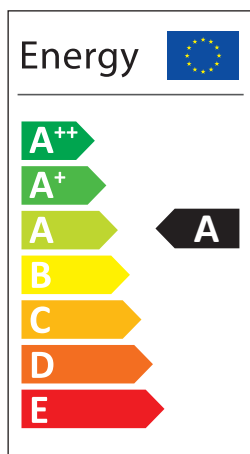
- High efficient shelf lighting for cooling shelves
- Available in a variety of light colours and can be matched to specific food types
- Ready-to-connect solution available, thanks to our Quick Connection System (QCS)
- High operational performance due to directional lighting, integrated heat removal and highly efficient LEDs
- Excellent product illumination thanks to the combination of SMD LEDs and innovative optics
- Avoids glare and reflections
- Safe-use operation due safety extra-low voltage (SELV)
- Simple installation with application of fixing plates
- Heat sink profile made of anodised, extruded aluminium
- LED modules protected against moisture & dust by Conformal coating
- End caps made of PBT
- Linear lenses made of PMMA
- Dimming capability

TECHNICAL DATA

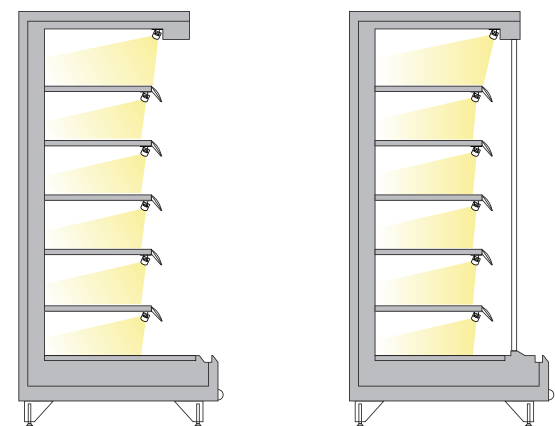
Supply voltage	24 VDC
Ambient temperature t_a	-30 ... +30 °C
Max. surface temperature on profile t_c	60 °C
Type of protection	IP20
Protection class	III
Risk group (EN 62471:2008)	1

IP20

ENERGY CLASS



APPLICATION



SHELF | Sense Line

TECHNICAL DATA | ORDER DATA

Art. Nr.	Type	Colour	No. of modules	Luminous flux (lm)	Power (W)	CRI
91440024	Sense-Line Shelf 910mm, 4000K CRI90, 6W, COW8QY	Neutral White	6	610	6,0	≥90
91440025	Sense-Line Shelf 910mm, 3000K CRI90, 6W, COW8QY	Warm White	6	540	6,0	≥90
91440026	Sense-Line Shelf 910mm, 2700K CRI90, 6W, COW8QY	Pasta & Cheese	6	510	6,0	≥90
91440027	Sense-Line Shelf 910mm, Meat CRI90, 6W, COW8QY	Meat & Deli	6	480	6,0	≥90
91440028	Sense-Line Shelf 1200mm, 4000K CRI90, 8W, COW8QY	Neutral White	8	810	8,0	≥90
91440029	Sense-Line Shelf 1200mm, 3000K CRI90, 8W, COW8QY	Warm White	8	710	8,0	≥90
91440030	Sense-Line Shelf 1200mm, 2700K CRI90, 8W, COW8QY	Pasta & Cheese	8	680	8,0	≥90
91440031	Sense-Line Shelf 1200mm, Meat CRI90, 8W, COW8QY	Meat & Deli	8	640	8,0	≥90

Packaging: 12 pieces/carton, 360 pieces/pallet

- All typical values for Ta=25°C +/- 2°C, setting time =200ms
- Luminous flux min. value = typ. value - 20%
- Tolerance mechanical dimensions +/- 1mm
- Tolerance electrical data +/- 15%
- Tolerance optical data +/-10%

CONVERTER

Output voltage	24VDC +10%
Power converter	= sum of the typical individual power of the light engines + 20%
Chain length (luminaires)	120mA: max 21 modules 100mA: max 24 modules 80mA: max 28 modules 60mA: max 33 modules 40mA: max 40 modules

Selection of the operating device/protective functions

The operating device protects the modules against overvoltage, overcurrent, overload and short circuits. The device must comply with the relevant standards for safe operation in freezer and refrigeration equipment. Power supply units must ensure the following protective measures:

- SELV
- Short-circuit protection
- Overload protection
- Overtemperature protection
- Protection against environmental influences

ACCESSORY - MOUNT | FIXING PLATES

Type	Shelf Holders - left and right part
Art. Nr.	88167377

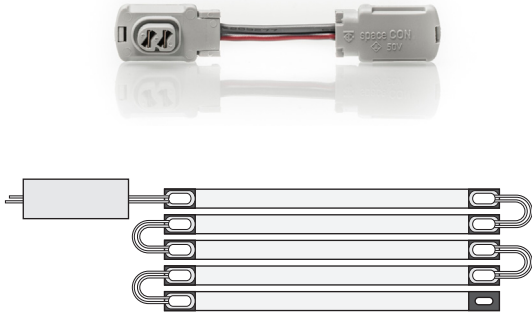


Type	METAL 0°	METAL 0° magnetic	METAL 30°	METAL 45°	METAL adjustable	METAL adjustable magnetic
Art. Nr.	88167376	88167382	88167378	88167379	88167384	88167385



SHELF | Sense Line

QUICK-CONNECTION-SYSTEM (QCS) | BRIDGES



- Bridge for connecting two linear LED engines via QCS
- Bridge for connecting a linear LED engine to a feeder link via QCS

ORDER DATA - Bridges

Length	Weight	Type	Art. Nr.
30 mm	0.004 kg	LED Bridge QCS 30 **	89601262
50 mm	0.004 kg	LED Bridge QCS 50 **	89601263
100 mm	0.005 kg	LED Bridge QCS 100 **	89601264
250 mm	0.007 kg	LED Bridge QCS 250 **	89601265
400 mm	0.009 kg	LED Bridge QCS 400 **	89601266
800 mm	0.016 kg	LED Bridge QCS 800 **	89601267
1,200 mm	0.022 kg	LED Bridge QCS 1200 *	89601268
2,000 mm	0.034 kg	LED Bridge QCS 2000 *	89601269

Packaging: * 25 pieces/carton, 400 pieces/pallet | ** 50 pieces/carton, 800 pieces/pallet
Also available in black.

RoHS

QUICK-CONNECTION-SYSTEM (QCS) | FEEDER CABLE



- Feeder cable for connecting a linear LED engine to a converter via QCS

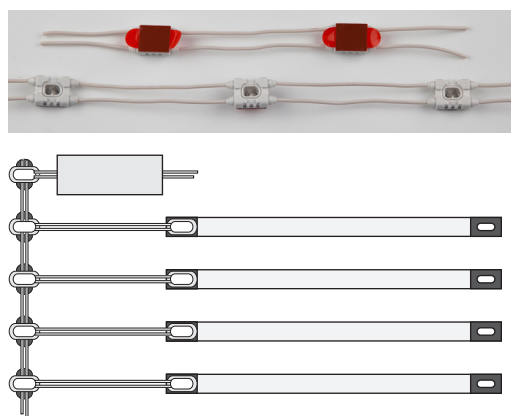
ORDER DATA - Feeder Cable

Length	Weight	Type	Art. Nr.
500 mm	0.009 kg	LED Feeder QCS 500 **	89601258
1,000 mm	0.017 kg	LED Feeder QCS 1000 **	89601259
1,500 mm	0.025 kg	LED Feeder QCS 1500 *	89601260
2,000 mm	0.033 kg	LED Feeder QCS 2000 *	89601261
4,000 mm	0.065 kg	LED Feeder QCS 4000 ***	89601601

Packaging: * 25 pieces/carton, 400 pieces/pallet | ** 50 pieces/carton, 800 pieces/pallet | *** 10 pieces/carton
Also available in black.

RoHS

QUICK-CONNECTION-SYSTEM (QCS) | FEEDER LINK



- Flexible feeder link for connecting several linear LED engines to a converter
- Slots equipped with double-sided adhesive tape

ORDER DATA - Feeder Link

Length	Spacing	Type	Art. Nr.
10m	108 mm	LED Feeder Link QCS	88711762

Packaging: 1 roll corresponds to 10m with 92 slots

RoHS

SHELF | Sense Line

■ QCS | MULTIPLE CONNECTOR LINE QCS



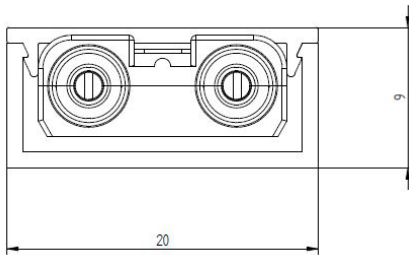
- Multiple Connector Line for connecting several linear LED engines to a converter

■ ORDERING DATA – Multiple Connector Line QCS

Length	Spacing	Type	Art. Nr.
1,0m	10cm	MULTIPLE CONNECTOR LINE QCS white 1,0m (10 plugs)	88167422

Packaging: 2 pieces/carton, 24 pieces/outer carton

RoHS



■ QCS | PROTECTION SET



- Cover to protect QCS connectors

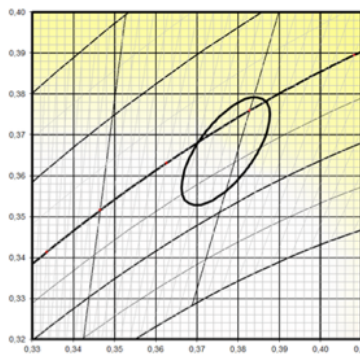
■ ORDERING DATA – Protection Set

Type	Packaging	Art. Nr.
LED PROTECTION QCS BLIND CAP	1 bag (holds 100 pieces)	88167414
LED PROTECTION QCS END CAP	1 bag (holds 50 pieces)	88167415

RoHS

■ COORDINATES AND TOLERANCES ACCORDING TO CIE 1964 - DATA REFERS ONLY TO LED MODULES WITHOUT COVER

Neutral White



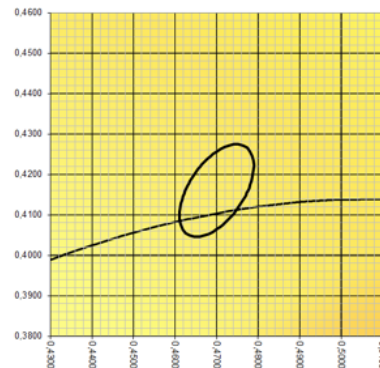
CIE coordinates

Neutral White 4100K

	x0	y0
Centre	0,3770	0,3660
MacAdam Ellipse: 3SDCM		

Suitable, e.g., for dairy products and frozen products

Pasta & Cheese



CIE coordinates

Pasta & Cheese 2600K

	x0	y0
Centre	0,4750	0,4160
MacAdam Ellipse: 3SDCM		

Special colour for pasta & cheese

Warm White



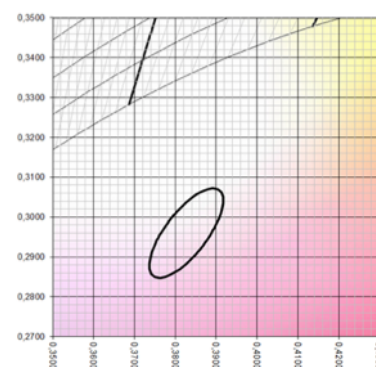
CIE coordinates

Warm White 2800K

	x0	y0
Centre	0,4480	0,3990
MacAdam Ellipse: 3SDCM		

Suitable, e.g., for vegetables, fruit and wine

Meat & Deli



CIE coordinates

Meat & Deli

	x0	y0
Centre	0,3830	0,3060
MacAdam Ellipse: 3SDCM		

Special colour for meat and deli

SHELF | Sense Line

COLOUR KEY

Code	CW	NW	WW	PC	BP	PM
Colour	Cool White	Neutral White	Warm White	Pasta & Cheese	Bread & Pastries	Meat & Deli
CCT	5000K	4000K	3000K	2700K	2400K	special colour

LIFETIME

50.000h (L70 B10)

THERMAL BEHAVIOUR

Operating temperature (operation, no defects)	ta	-30 ... +30 °C
Storage temperature	ts	-30 ... +60 °C
Temperature cooling profile ¹²	tc	-30 ... +60 °C

¹ Values apply to operation at 100% output, natural convection.

² If the maximum temperature limits are exceeded, the lifetime of the module will be greatly reduced or the module may be destroyed. The tc point temperature at the profile of the light engine should be measured in the thermally stable state and under operating conditions by means of a temperature sensor or temperature-sensitive sticker (available for example from conrad.com or rs-components.com) in accordance with EN60598-1. The entire profile can be used as the tc point.

STANDARDS

- EN 60598-1
- EN 60598-2-1
- EN 62031
- EN 62471
- EN 60335-2-89 ANNEX BB



Note

- Installation should only be conducted by a licensed electrician.
- Reversing the polarity can damage the product!
- Make sure the converter has been switched off prior to connecting the light engine. If this is not observed, the light engine may be damaged!
- Connection or operation is only permitted when using the specified converters. Higher voltages result in damage to or failure of the light engine.
- The user is responsible for correct selection of illumination intensity. Excessive illumination intensity may lead to greying or colour changes of displayed products.