



YOUR LIGHTING SOLUTION

LUMITECH

CHALLENGES OF OUR CUSTOMERS...

„stable supply chain“

„innovative ideas“

„long-term business relationships“

„individual design“

„single contact for light“

„holistic LED lighting solutions“

„flexibility“

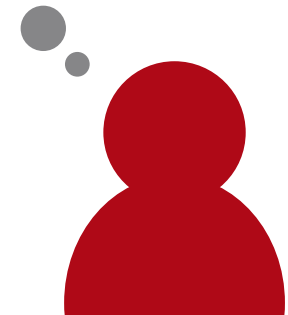
„development and production on site“

„specific colours and
light spectra“

„miniaturization“

„UV - applications“

„infrared LED lighting“



LUMITECH

OUR VISION

LUMITECH

YOUR LIGHTING SOLUTION

We develop and deliver the most innovative lighting solutions for our OEM customers: To help them to differentiate, to improve their image and to grow their business sustainably.

LUMITECH

OUR MISSION

What's important for us:

- We understand customer needs and together develop solutions and Design In's
- We offer specific best in class modular product platforms (LED luminaires, LED modules, controls and IoT)

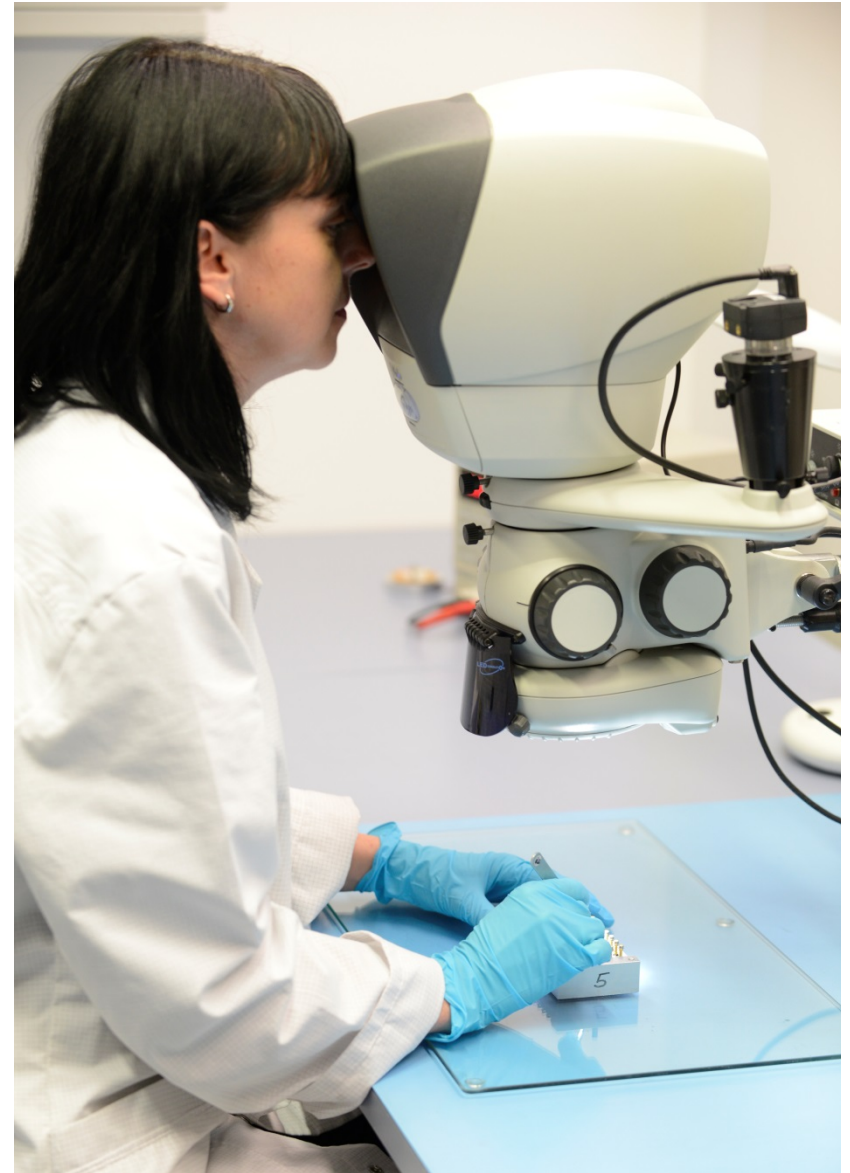


LUMITECH

OUR SECRET

What makes LUMITECH special:

- A deep technological competence
(Engineered in Austria)
- An excellent manufacturing know how and
perfect delivery service (made in EU)



LUMITECH

OUR CUSTOMERS

Refrigerated cabinets and shopfitting Manufacturers

- we understand what the retail consumer expects and what he dislikes
- we increase the shelf time of fresh food products
- we offer the best standard portfolio and individual solutions as well as IOT
- we support the Design-In at retailers

Lighting OEM's

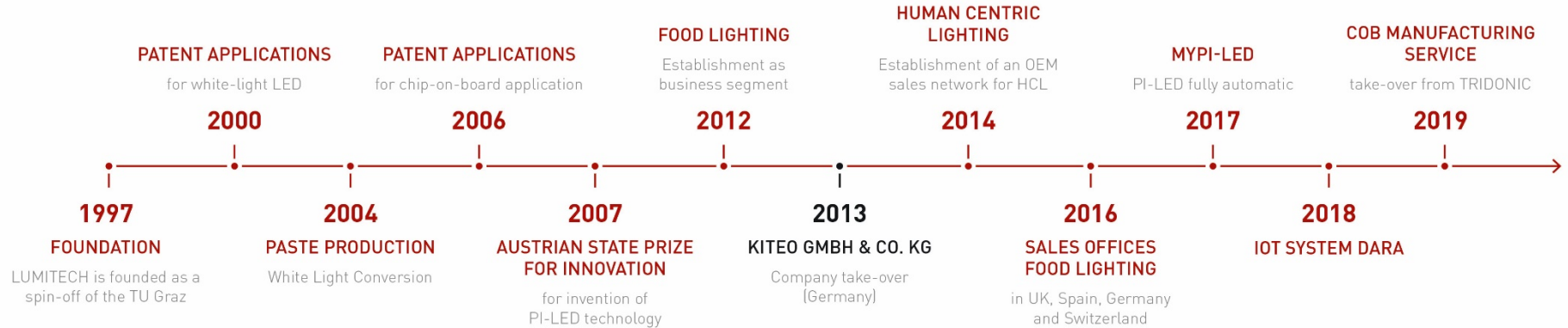
- PI-LED as the leading technology for Human Centric Lighting
- individual design-in support
- comprehensive PI-LED portfolio based on PI-LED panels, modules, converters & controls + IOT
- IP rated product portfolio for linear architectural lighting
- we support the design in at lighting designers and architects

Industrial Manufacturer (medical, machine vision, etc.)

- Individual chip on board solutions
- Product development side by side with our customers
- Industrialization and manufacturing in Jennersdorf (AT)
- Fully automated COB-production
- Long-term availability due to design upgrades

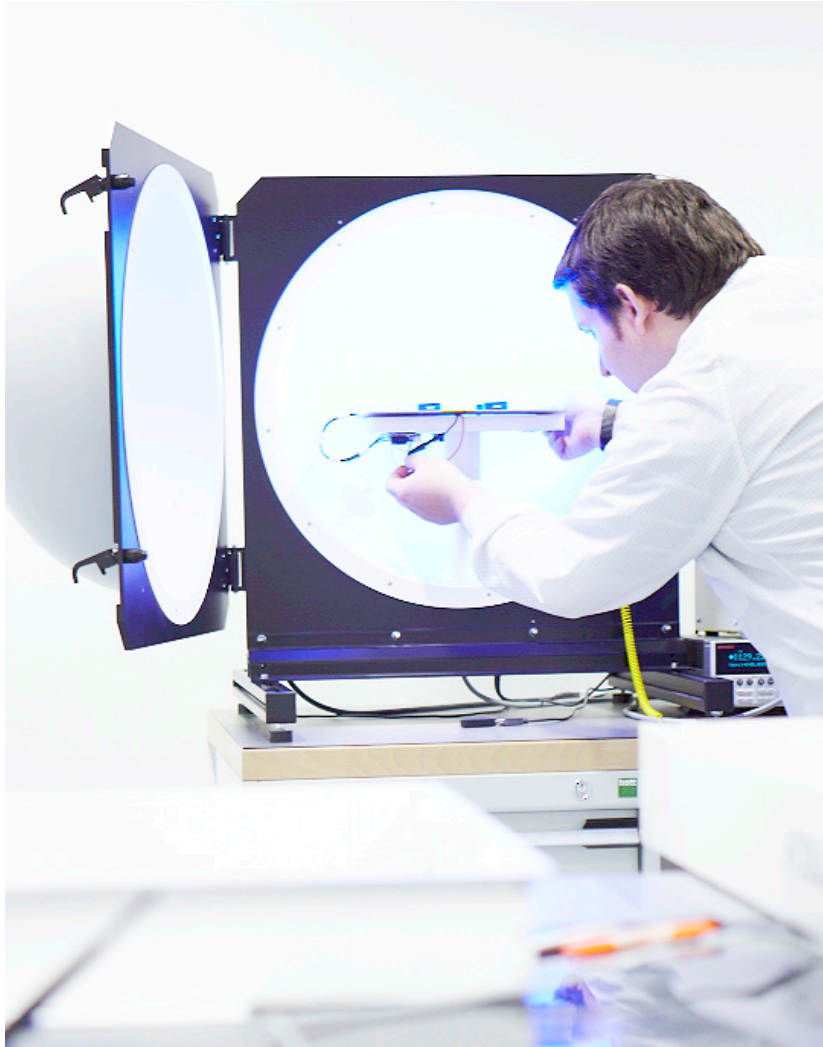
LUMITECH

MILESTONES



LUMITECH

PATENTS AND PARTNERS



- Proprietary patents in the LED field
- Patent agreement with Philips, Osram, Zumtobel, etc...
- Patent safety thanks to cooperation with reliable partners
- Use of components from highly-qualified suppliers who have made quality their priority

LUMITECH

INDIVIDUAL LED-SOLUTIONS FOR INDUSTRIAL APPLICATIONS

Applications illuminated by LUMITECH:

- Medical luminaires
- Medical equipment
- Railway signals
- Machine vision
- etc. ...



LUMITECH

OUR SERVICES - YOUR ADVANTAGES

Product development side by side with you and exactly tailored to your needs

- Collection of product requirements
- Concept creation
- Product development
- Technical product specification
- Sampling
- Industrialisation



The best materials for your products

- We only use materials from qualified and well-known suppliers
- Extensive qualification and approval of new materials
- Strict quality control of raw materials



LUMITECH

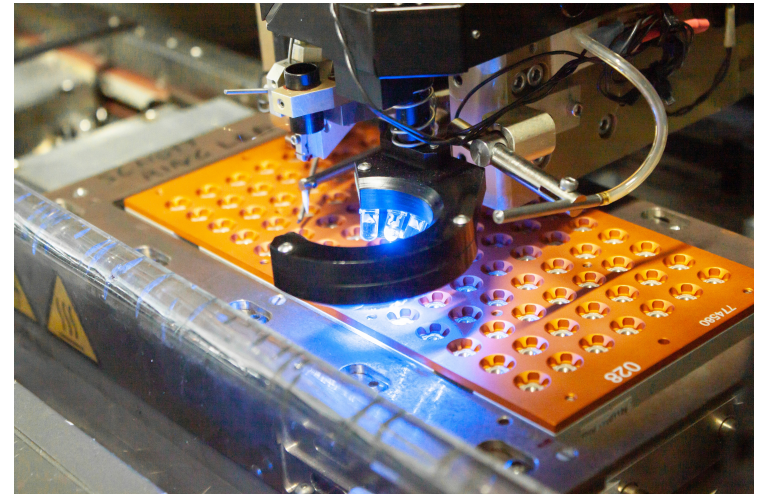
OUR SERVICES - YOUR ADVANTAGES

Chip on board manufacturing in the heart of Europe

- Use of high-precision systems
- New design options, tailored to your applications
- High expertise for your specific light colour

LED know-how since 1997

- Our employees have more than 20 years experience in the field of LED technology
- Extensive network with selected partners and experts in industry
- High level of quality and reliability



LUMITECH

COB-MANUFACTURING IN THE HEART OF EUROPE

Fully automated Multichip Die Bonding – Datacon 2200 EVO

- Up to 3500 pick and place processes per hour
- Individual PCB-size (100-330mm length / 22-103,6mm width)
- Mounting accuracy +/- 10 μ m @ 3sigma
- Multiwafer handling of different chip formats



Fully automated Ball-Wedge Wire Bonding – Palomar 8000

- Up to 8000 wire bonds per hour
- Mounting accuracy +/- 1,5 μ m @ 3sigma
- Dual z-axis for deep access bonding
- Bonding area x=300mm / y=103,6-150mm / z=15-20mm



LUMITECH

COB-MANUFACTURING IN THE HEART OF EUROPE

Fully automated mounting of electronic components and optics

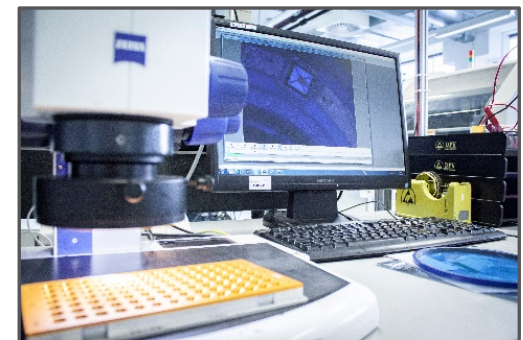
- Accuracy XY +/- 51µm @ 3sigma
- Use of feeders or trays possible
- Maximum components size 33x33x18mm

Vollautomatisches Dispensing – Essemtec Scorpion

- Accuracy XY +/- 51µm @ 3sigma
- Piezo jetting technology
- Accuracy of dispensing volume +/- 2%
- Finest decompositions in the pLiter range

100% quality inspection of the products

- Functional testing
- Measurement of electro-optical parameters (lightflux, CRI, CIE x/y, Vf, If, etc...)



LUMITECH

CORE COMPETENCIES

Chip On Board – COB technology

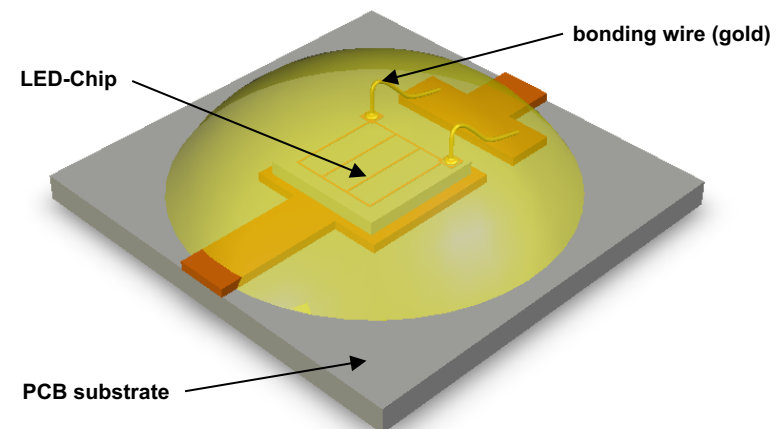
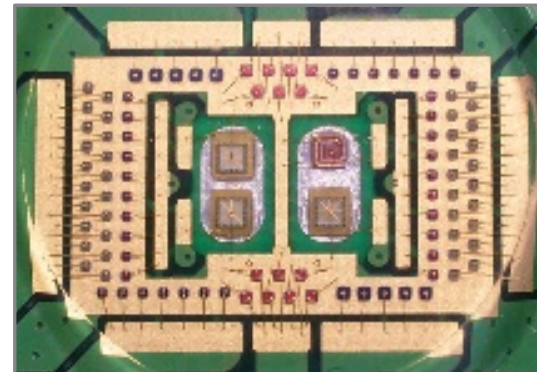
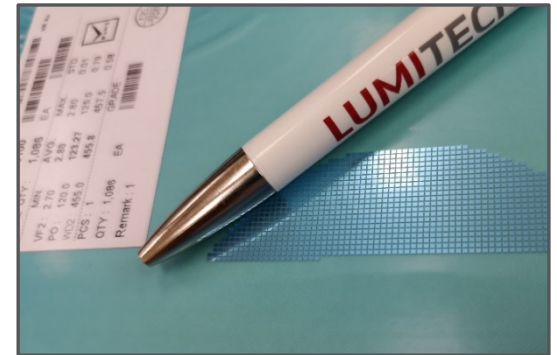
Die Bonding:

Direct mounting of the semiconductor (LED chip) on the PCB substrate

Wire Bonding:

electrical contacting of semiconductor and PCB substrate

- Excellent thermal behaviour
- High packing density
- High light output on small surface
- High level of miniaturization
- Freedom in design



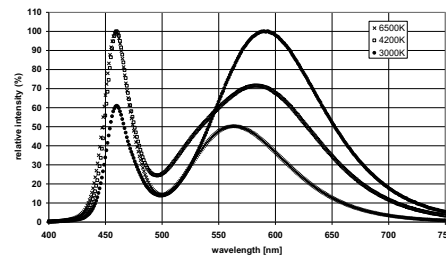
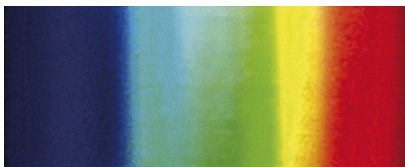
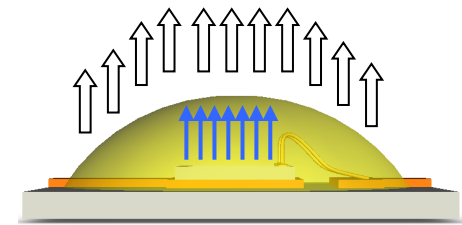
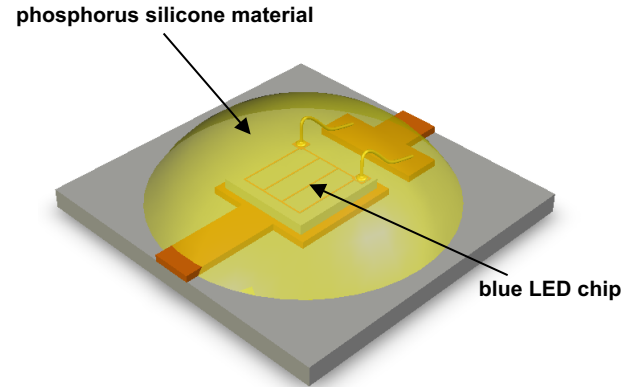
LUMITECH

CORE COMPETENCES

Colour conversion and sealing – dispensing

Potting the LED with silicone material (transparent or phosphor converted)

- Individual white light production
- Competence in phosphor conversion
- Individual colours
- UV and infrared
- individual globe top design
- use of dam & fill technology
- Ideal conditions for use of secondary optics





YOUR LIGHTING SOLUTION