

## DOOR LIGHTING COOLER | Sense Line GenX



COOL

Refrigeration equipment



Central door lighting



Lateral door lighting



Plug-in solution  
Cinch-Connection-System



Dimmable



High efficiency



## DOOR LIGHTING COOLER| Sense Line GenX

### PRODUCT DESCRIPTION

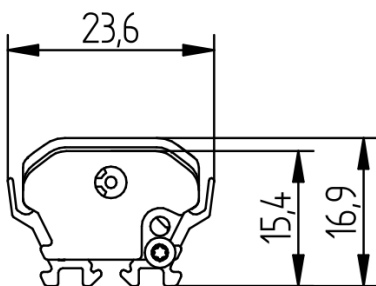
- High efficient, slim lighting for refrigeration equipment doors
- Ready-to-connect solution available, thanks to our Cinch Connection System
- High operational performance due to directional lighting, integrated heat removal and highly efficient LEDs
- Excellent product illumination thanks to the combination of SMD LEDs and innovative optics
- No glare or lateral insight
- Safe-use operation due safety extra-low voltage (SELV)
- Simple installation with application of FIXING Plates (optional also tape)
- Heat sink profile made of anodised, extruded aluminium
- LED modules protected against moisture & dust by Conformal coating
- End caps made of PBT
- Linear lenses made of Polycarbonate (GWT up to 850°C)
- Dimming capability

### TECHNICAL DATA

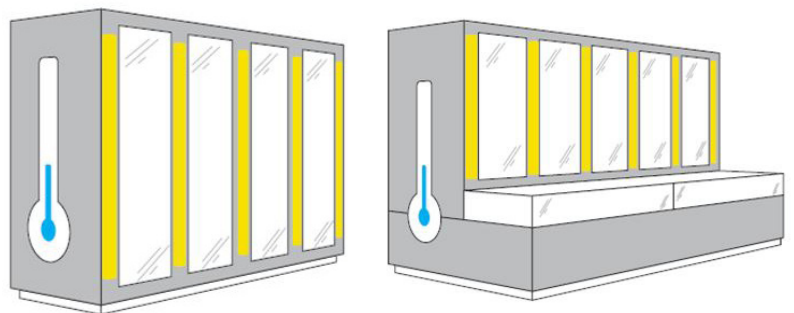
Supply voltage	24 VDC
Ambient temperature $t_a$	-30 ... +30 °C
Max. surface temperature on profile $t_c$	60 °C
Type of protection	IP54 (only with „PROTECTION KIT“)
Protection class	III
Risk group [EN 62471:2008]	0



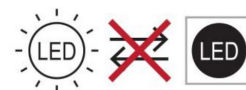
### SKETCH



### APPLICATION



Non-replaceable light source



## DOOR LIGHTING COOLER| Sense Line GenX

### TECHNICAL DATA | ORDER DATA

Art. No.	Type	Length	Light colour	No. of LED modules	Efficiency	Luminous flux	Power	CRI	EEC light source
91440047	LED LE1250 NW 8L14-GenX 24V/80mA SES3DY C	1.250mm	Neutral White	8	113lm/W	1710lm	15,2W	≥90	E
91430397	LED LE1250 NW 8L14-GenX 24V/50mA SES3DY E	1.250mm	Neutral White	8	105lm/W	1010lm	9,6W	≥90	E
91440048	LED LE1250 WW 8L14-GenX 24V/80mA SES3DY C	1.250mm	Warm White	8	102lm/W	1550lm	15,2W	≥90	F
91430398	LED LE1250 WW 8L14-GenX 24V/50mA SES3DY E	1.250mm	Warm White	8	96lm/W	920lm	9,6W	≥90	F
91440050	LED LE1250 PM 8L14-GenX 24V/70mA SES3DY C	1.250mm	Meat & Deli	8	116lm/W	1490lm	12,8W	≥90	E
91430399	LED LE1250 PM 8L14-GenX 24V/40mA SES3DY E	1.250mm	Meat & Deli	8	113lm/W	900lm	8,0W	≥90	E
91440051	LED LE1500 NW 10L14-GenX 24V/80mA SES3DY C	1.500mm	Neutral White	10	113lm/W	2140lm	19,0W	≥90	E
91430400	LED LE1500 NW 10L14-GenX 24V/50mA SES3DY E	1.500mm	Neutral White	10	105lm/W	1260lm	12,0W	≥90	E
91440052	LED LE1500 WW 10L14-GenX 24V/80mA SES3DY C	1.500mm	Warm White	10	102lm/W	1930lm	19,0W	≥90	F
91430401	LED LE1500 WW 10L14-GenX 24V/50mA SES3DY E	1.500mm	Warm White	10	96lm/W	1150lm	12,0W	≥90	F
91440054	LED LE1500 PM 10L14-GenX 24V/70mA SES3DY C	1.500mm	Meat & Deli	10	116lm/W	1860lm	16,0W	≥90	E
91430402	LED LE1500 PM 10L14-GenX 24V/40mA SES3DY E	1.500mm	Meat & Deli	10	113lm/W	1130lm	10,0W	≥90	E
91440055	LED LE1650 NW 11L14-GenX 24V/80mA SES3DY C	1.650mm	Neutral White	11	113lm/W	2355lm	20,9W	≥90	E
91430403	LED LE1650 NW 11L14-GenX 24V/50mA SES3DY E	1.650mm	Neutral White	11	105lm/W	1390lm	13,2W	≥90	E
91440056	LED LE1650 WW 11L14-GenX 24V/80mA SES3DY C	1.650mm	Warm White	11	102lm/W	2130lm	20,9W	≥90	F
91430404	LED LE1650 WW 11L14-GenX 24V/50mA SES3DY E	1.650mm	Warm White	11	96lm/W	1265lm	13,2W	≥90	F
91440058	LED LE1650 PM 11L14-GenX 24V/70mA SES3DY C	1.650mm	Meat & Deli	11	116lm/W	2050lm	17,6W	≥90	E
91430405	LED LE1650 PM 11L14-GenX 24V/40mA SES3DY E	1.650mm	Meat & Deli	11	113lm/W	1240lm	11,0W	≥90	E

Packaging: 12 pieces/carton, 360 pieces/pallet

- All typical values for Ta=25°C +/- 2°C
- Luminous flux min. value = typ. value - 20%
- Tolerance mechanical dimensions +/- 1mm
- Tolerance electrical data +/- 15%
- Tolerance optical data +/- 15%
- Tolerance min. value CRI +/- 1

Luminaires also available in other LUMITECH light colours:

Cool White  
5000K

Bread & Pastries  
2400K

Pasta & Cheese  
2700K

### CONVERTER

Output voltage	24VDC +10%
Power converter	= sum of the typical individual power of the light engines + 20%
Chain length (luminaires)	Vertical luminaires cannot be daisy-chained!  These luminaires must be connected in parallel to the converter!

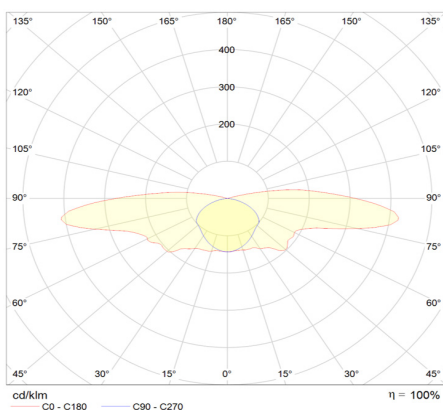
#### Selection of the operating device/protective functions

The operating device protects the modules against overvoltage, overcurrent, overload and short circuits. The device must comply with the relevant standards for safe operation in freezer and refrigeration equipment and must be also technically approved by LUMITECH Lighting Solution GmbH. Power supply units must ensure the following protective measures:

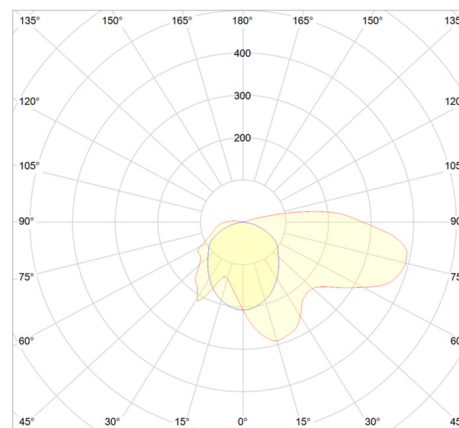
- SELV
- Short-circuit protection
- Overload protection
- Overtemperature protection
- Protection against environmental influences

### OPTICAL PROPERTIES - LUMINAIRE

#### Center

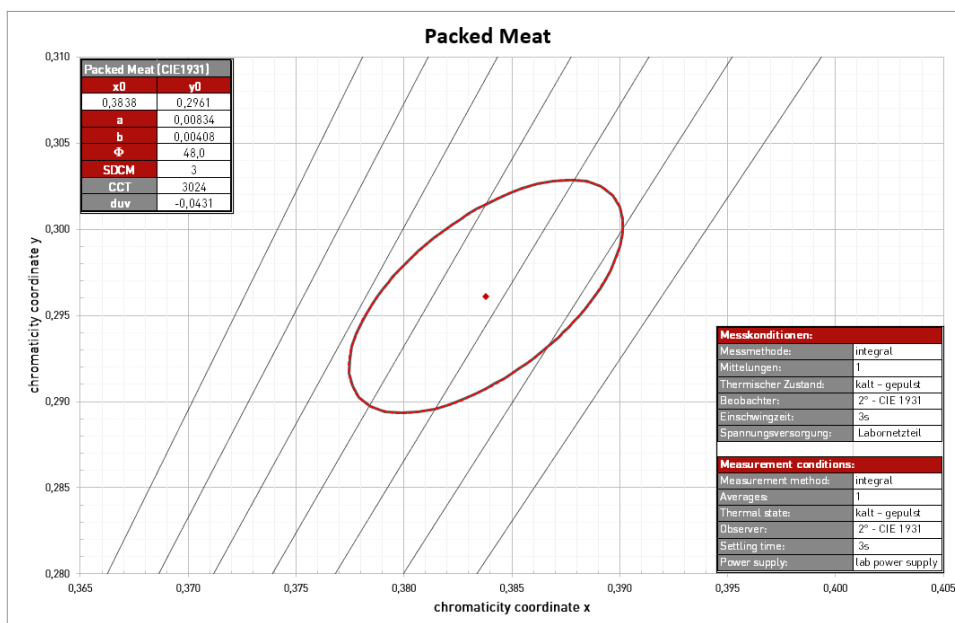
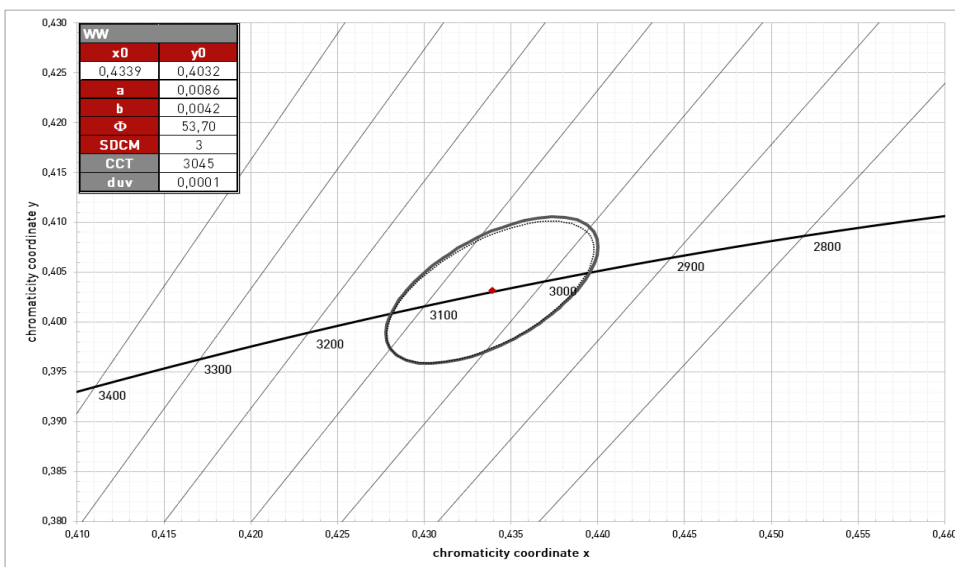
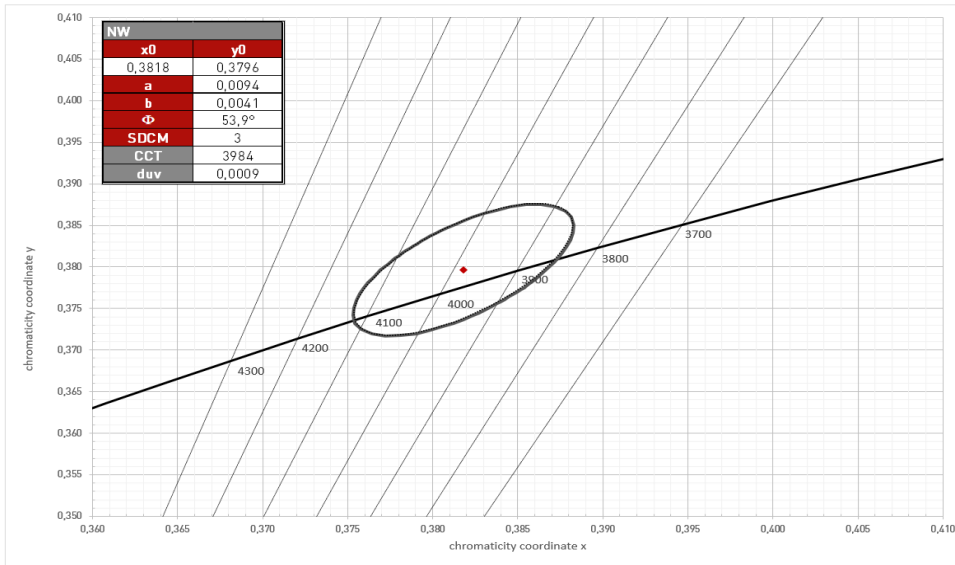


#### END



# DOOR LIGHTING COOLER| Sense Line GenX

## COORDINATES AND TOLERANCES\*



\*Data refers only to LED MODULES WITHOUT LENS!  
\*Colour shift through the lens is possible on request!

## DOOR LIGHTING COOLER| Sense Line GenX

### COLOUR KEY

Code	CW	NW	WW	PC	BP	PM
Colour	Cool White	Neutral White	Warm White	Pasta & Cheese	Bread & Pastries	Meat & Deli
CCT	5000K	4000K	3000K	2700K	2400K	special colour

### LIFETIME

70.000h (L80 B10)

### STANDARDS

- EN 60598-1
- EN 60598-2-1
- EN 62031
- EN 62471
- EN 60335-2-89
- PRP/HACCP (Food Safety)

### THERMAL BEHAVIOUR

Operating temperature (operation, no defects)	ta	-30 ... +30 °C
Storage temperature	ts	-30 ... +60 °C
Temperature cooling profile <sup>12</sup>	tc	-30 ... +60 °C

<sup>1</sup> Values apply to operation at 100% output, natural convection.

<sup>2</sup> If the maximum temperature limits are exceeded, the lifetime of the module will be greatly reduced or the module may be destroyed. The tc point temperature at the profile of the light engine should be measured in the thermally stable state and under operating conditions by means of a temperature sensor or temperature-sensitive sticker (available for example from conrad.com or rs-components.com) in accordance with EN60598-1. The entire profile can be used as the tc point.



#### Note

- Installation should only be conducted by a licensed electrician.
- Reversing the polarity can damage the product!
- Make sure the converter has been switched off prior to connecting the light engine. If this is not observed, the light engine may be damaged!
- Connection or operation is only permitted when using the specified converters. Higher voltages result in damage to or failure of the light engine.
- The user is responsible for correct selection of illumination intensity. Excessive illumination intensity may lead to greying or colour changes of displayed products.