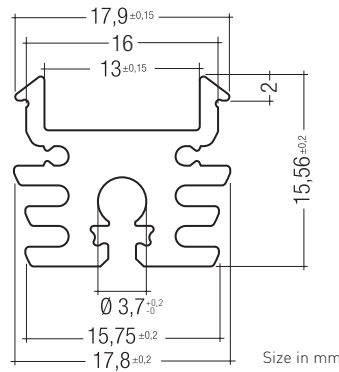
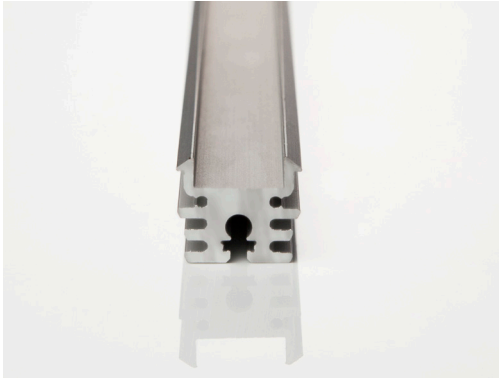


PROFILE | Z22W-2

## PROFILE | Z22W-2



### PRODUCT DESCRIPTION

- Aluminium mounting plate for LED modules up to a width of 12 mm
- Use in combination with different lenses is possible
- Aluminium, anodised natural
- Mounting unit for plastic cover
- Installation with Fixing Plates
- Compact cross-section (15.56 x 17.9 mm)
- Can be expanded with extensive accessories (optional)

### TECHNICAL DATA

Dimensions LxWxH	2,000 <sup>1</sup> x 17.9 x 16 mm
Weight	0.709 kg
Coefficient of linear expansion	23 * 10 <sup>-6</sup> / K

<sup>1</sup>Tolerance length: ± 1 mm

RoHS

### ORDERING DATA - PROFILE | Z22W-2

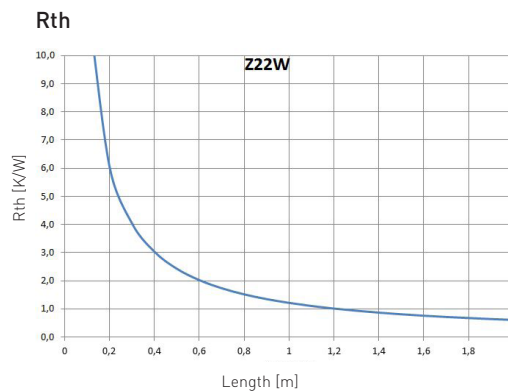
Type	Art. Nr.
LED Z22W-2 MOUNTING PROFILE AL - 2m	24166150

### PROPERTIES

#### Cooling properties

Cooling capacity @ 0°C ambient temperature:	48 W/m thermal power
Cooling capacity @ 25°C ambient temperature:	29 W/m thermal power
Cooling capacity @ 40°C ambient temperature:	18 W/m thermal power

Remark: Data valid for 63°C profile temperature. The applicable electrical power depends on the optical efficiency of the mounted LED modules. E.g. for LEDs with 30% optical efficiency, the applicable electrical power results as thermal power divided by [1 - 0,3].



The actual R<sub>th</sub> can differ because of the inbuilt situation.